

RIVER HALL

**COMMUNITY DEVELOPMENT
DISTRICT**

February 5, 2026

BOARD OF SUPERVISORS

**REGULAR MEETING
AGENDA**

RIVER HALL
COMMUNITY DEVELOPMENT DISTRICT

AGENDA
LETTER

River Hall Community Development District
OFFICE OF THE DISTRICT MANAGER
2300 Glades Road, Suite 410W•Boca Raton, Florida 33431
Phone: (561) 571-0010•Toll-free: (877) 276-0889•Fax: (561) 571-0013
<https://riverhallcdd.org/>

January 29, 2026

Board of Supervisors
River Hall Community Development District

ATTENDEES:
Please identify yourself each
time you speak to facilitate
accurate transcription of
meeting minutes.

Dear Board Members:

The Board of Supervisors of the River Hall Community Development District will hold a Regular Meeting on February 5, 2026 at 3:30 p.m., at the River Hall Town Hall Center, located at 3089 River Hall Parkway, Alva, Florida 33920. The agenda is as follows:

1. Call to Order/Roll Call
2. Public Comments - Non-Agenda Items (*3 minutes per speaker*)
3. Update: Superior Waterway Services, Inc. Treatment Report – *Andy Nott*
4. Update: School Zone Signage
5. Discussion: Additional Street Lights on NW Corner of Hampton Blvd and River Hall Pkwy
6. Discussion: River Hall Pkwy Lift Odor
7. Continued Discussion: Bowman Consulting Group LTD River Hall Lake Investigation Memo
8. Acceptance of Unaudited Financial Statements as of December 31, 2025
9. Approval of January 8, 2026 Regular Meeting Minutes
10. Staff Reports
 - A. District Engineer: *Bowman Consulting Group LTD*
 - Water Usage (*for informational purposes*)
 - Lake Shore Repairs
 - B. District Counsel: *Coleman, Yovanovich & Koester*
 - C. District Manager: *Wrathell, Hunt and Associates, LLC*
 - NEXT MEETING DATE: March 5, 2026 at 3:30 PM

○ QUORUM CHECK

SEAT 1	PAUL D. ASFOUR	<input type="checkbox"/> IN PERSON	<input type="checkbox"/> PHONE	<input type="checkbox"/> NO
SEAT 2	BOB CUNNINGHAM	<input type="checkbox"/> IN PERSON	<input type="checkbox"/> PHONE	<input type="checkbox"/> NO
SEAT 3	KENNETH MITCHELL	<input type="checkbox"/> IN PERSON	<input type="checkbox"/> PHONE	<input type="checkbox"/> NO
SEAT 4	PATRICK F. INFANTE	<input type="checkbox"/> IN PERSON	<input type="checkbox"/> PHONE	<input type="checkbox"/> NO
SEAT 5	DANIEL BLOCK	<input type="checkbox"/> IN PERSON	<input type="checkbox"/> PHONE	<input type="checkbox"/> NO

D. Operations Manager: *Wrathell, Hunt and Associates, LLC*

11. Public Comments: Non-Agenda Items *(3 minutes per speaker)*
12. Supervisors' Comments/Requests
13. Adjournment

Should you have any questions, please do not hesitate to contact me directly at (239) 464-7114.

Sincerely,



Chesley E. Adams, Jr.
District Manager

FOR BOARD MEMBERS AND STAFF TO ATTEND BY TELEPHONE:

CALL-IN NUMBER: 1-888-354-0094
PARTICIPANT PASSCODE: 229 774 8903

RIVER HALL
COMMUNITY DEVELOPMENT DISTRICT

3



River Hall CDD
Lake Treatment Report
Treatment Dates Dec 2025

Lake #	Work Preformed	Target	Target	Treatment Date	Notes/Comments
1-1A	Treated	Grasses/Weeds		12/24	Sprayed exposed bank for grasses and weeds
1-1B	Treated	Grasses/Weeds		12/24	Sprayed exposed bank for grasses and weeds
1-2A	Treated	Grasses/Weeds		12/24 and 12/31	Sprayed exposed bank for grasses and weeds
1-2B	Treated	Grasses/Weeds		12/24 and 12/32	Sprayed exposed bank for grasses and weeds
1-3	Treated	Grasses/Weeds		12/19	Sprayed exposed bank for grasses and weeds
1-4	Treated	Grasses/Weeds		12/19	Sprayed exposed bank for grasses and weeds
1-6A	Inspected			12/19	No treatment needed at this time
1-6B	Treated	Grasses/Weeds		12/19	Sprayed exposed bank for grasses and weeds
2-1A	Inspected			12/19	No treatment needed at this time
2-1B	Treated	Grasses/Weeds		12/19	Sprayed exposed bank for grasses and weeds
2-2A	Treated	Grasses/Weeds		12/19	Sprayed exposed bank for grasses and weeds
2-2B	Treated	grasses/Weeds	Chara	12/12 and 12/19	Spot treated shoreline for Chara/Algae
2-2C	Treated	Grasses/Weeds		12/19 and 12/31	Sprayed exposed bank for grasses and weeds
2-2D	Treated	Grasses/Weeds		12/24	Crew treated lake bank grasses and weeds
2-2E	Treated	Grasses/Weeds		12/24	Crew treated lake bank grasses and weeds



River Hall CDD
Lake Treatment Report
Treatment Dates Dec 2025

Lake #	Work Preformed	Target	Target	Treatment Date	Notes/Comments
2-2F	Treated	Water Lilies	Grasses/Weeds	12/12 and 12/31	Sprayed Water Lillies
2-2G	Treated	Grasses/Weeds		12/31	Crew treated lake bank grasses and weeds
2-2H	Treated	Grasses/Weeds		12/19	Sprayed exposed bank for grasses and weeds
2-2I	Treated	Grasses/Weeds		12/19	Sprayed exposed bank for grasses and weeds
2-2J	Treated	Grasses/Weeds		12/19	Sprayed exposed bank for grasses and weeds
2-2K	Treated	Grasses/Weeds		12/19 and 12/31	Sprayed exposed bank for grasses and weeds
2-2L	Treated	Grasses/Weeds		12/18	Sprayed exposed bank for grasses and weeds
2-2M	Treated	Grasses/Weeds		12/18	Sprayed exposed bank for grasses and weeds
2-3A	Treated	Grasses/Weeds		12/18	Sprayed exposed bank for grasses and weeds
2-3B	Treated	Grasses/Weeds		12/18	Sprayed exposed bank for grasses and weeds
2-4A	Treated	Algae		12/19	Spot treated shoreline for Algae
2-4B	Treated	Algae		12/19	Spot treated shoreline for Algae
2-4C	Treated	Grasses/Weeds		12/19	Sprayed exposed bank for grasses and weeds
2-4D	Treated	Algae		12/19	Spot treated shoreline for Algae
2-4E	Treated	Grasses/Weeds		12/19	Sprayed exposed bank for grasses and weeds



River Hall CDD
Lake Treatment Report
Treatment Dates Dec 2025

Lake #	Work Preformed	Target	Target	Treatment Date	Notes/Comments
2-5A/2-5B	Treated	Torpedograss		12/3	Treated Littorals for Torpedograss
Flowway Lake 2	Treated	Torpedograss		12/3	Treated Littorals for Torpedograss
2-5C	Treated	Grasses/Weeds		12/19	Sprayed exposed bank for grasses and weeds
2-5D	Treated	Grasses/Weeds	Algae	12/19	Spot treated shoreline for Algae
2-6A	Treated	Grasses/Weeds		12/18	Sprayed exposed bank for grasses and weeds
2-6B	Treated	Grasses/Weeds		12/18	Sprayed exposed bank for grasses and weeds
2-6C	Treated	Grasses/Weeds		12/18	Sprayed exposed bank for grasses and weeds
2-7	Treated	Grasses/Weeds		12/18	Sprayed exposed bank for grasses and weeds
2-8A	Treated	Grasses/Weeds		12/18	Sprayed exposed bank for grasses and weeds
2-8B	Treated	Grasses/Weeds		12/18	Sprayed exposed bank for grasses and weeds
2-8C	Treated	Grasses/Weeds		12/18	Sprayed exposed bank for grasses and weeds
2-8D	Treated	Grasses/Weeds		12/18	Sprayed exposed bank for grasses and weeds
2-8E	Treated	Grasses/Weeds		12/18	Sprayed exposed bank for grasses and weeds
3-1	Treated	Algae		12/19	Spot treated shoreline for Algae
3-2	Treated	Grasses/Weeds		12/19	Sprayed exposed bank for grasses and weeds



River Hall CDD
Lake Treatment Report
Treatment Dates Dec 2025

Lake #	Work Preformed	Target	Target	Treatment Date	Notes/Comments
3-3	Treated	Torpedograss		12/3	Treated Littorals for Torpedograss
3-3A	Treated	Torpedograss		12/3	Treated Littorals for Torpedograss
3-4A	Treated	Torpedograss		12/3	Treated Littorals for Torpedograss
3-4B	Treated	Torpedograss		12/3	Treated Littorals for Torpedograss
3-4C	Treated	Torpedograss		12/3	Treated Littorals for Torpedograss
3-5A	Inspected			12/3	No treatment needed at this time
3-5B	Treated	Torpedograss		12/3	Treated Littorals for Torpedograss
3-5C	Treated	Torpedograss		12/3	Treated Littorals for Torpedograss
3-5D	Treated	Torpedograss		12/3	Treated Littorals for Torpedograss
3-5E	Treated	Torpedograss		12/3	Treated Littorals for Torpedograss
4-1A	Treated	Torpedograss		12/3	Treated Littorals for Torpedograss
4-1B	Treated	Torpedograss		12/3	Treated Littorals for Torpedograss
4-1C	Treated	Torpedograss		12/3	Treated Littorals for Torpedograss
4-1D	Treated	Torpedograss		12/3	Treated Littorals for Torpedograss
4-1E	Treated	Grasses/Weeds		12/31	Treated exposed lake bank for grasses and weeds



River Hall CDD

Lake Treatment Report

Treatment Dates Dec 2025

[illegible]



River Hall CDD

Lake Treatment Report

Treatment Dates Dec 2025

Lake inspection was done on January 21st I'm happy with the condition of this property there were few lakes with Chara/Algae noted, these lake will be monitored and treated as needed, 2-3A, 2-5E, 3-5B, 3-5C, and 4-2B

In addition to our regular lake tech treatments we had our crew out treating the exposed banks for grasses and weeds we will continue to send our crew out as needed to help with Littorals and exposed banks

River Hall CDD

Lake Treatment Report

Treatment Dates Dec 2025



Lake **1-2A**

Notes/Comments

No problem noted during my inspection

Action Needed

Routine maintenance



Lake **L1-3**

Notes/Comments

No problem noted during my inspection

Action Needed

Routine maintenance



Lake **1-6B**

Notes/Comments

No problem noted during my inspection

Action Needed

Routine maintenance

River Hall CDD
Lake Treatment Report
Treatment Dates Dec 2025



Lake **2-2D**

Notes/Comments

No problem noted during my inspection

Action Needed

Routine maintenance



Lake **2-1A**

Notes/Comments

No problem noted during my inspection

Action Needed

Routine maintenance



Lake **2-2E**

Notes/Comments

No problem noted during my inspection

Action Needed

Routine maintenance

River Hall CDD
Lake Treatment Report
Treatment Dates Dec 2025



Lake **2-2F**

Notes/Comments

No problem noted during my inspection

Action Needed

Routine maintenance



Lake **2-2G**

Notes/Comments

No problem noted during my inspection

Action Needed

Routine maintenance



Lake **2-2I**

Notes/Comments

No problem noted during my inspection

Action Needed

Routine maintenance

River Hall CDD
Lake Treatment Report
Treatment Dates Dec 2025



Lake **2-3A**

Notes/Comments

Minimal
Chara

Action Needed

Monitor and treat as needed



Lake **2-4B**

Notes/Comments

No problem noted during my inspection

Action Needed

Routine maintenance



Lake **2-4E**

Notes/Comments

No problem noted during my inspection

Action Needed

Routine maintenance

River Hall CDD
Lake Treatment Report
Treatment Dates Dec 2025



Lake **2-5E**

Notes/Comments

Minimal
Chara

Action Needed

Monitor and treat as needed



Lake **2-6C**

Notes/Comments

No problem noted during my inspection

Action Needed

Routine maintenance



Lake **2-8E**

Notes/Comments

No problem noted during my inspection

Action Needed

Routine maintenance

River Hall CDD
Lake Treatment Report
Treatment Dates Dec 2025



Lake **L3-1**

Notes/Comments

No problem noted during my inspection

Action Needed

Routine maintenance



Lake **3-3A**

Notes/Comments

No problem noted during my inspection

Action Needed

Routine maintenance



Lake **3-4B**

Notes/Comments

No problem noted during my inspection

Action Needed

Routine maintenance

River Hall CDD
Lake Treatment Report
Treatment Dates Dec 2025



Lake **3-4C**

Notes/Comments

No problem noted during my inspection

Action Needed

Routine maintenance



Lake **3-5A**

Notes/Comments

No problem noted during my inspection

Action Needed

Routine maintenance



Lake **3-5B**

Notes/Comments

Minimal
Chara

Action Needed

Monitor and treat as needed

River Hall CDD
Lake Treatment Report
Treatment Dates Dec 2025



Lake **3-5E**

Notes/Comments

No problem noted during my inspection

Action Needed

Routine maintenance



Lake **4-1B**

Notes/Comments

No problem noted during my inspection

Action Needed

Routine maintenance



Lake **4-1E**

Notes/Comments

No problem noted during my inspection

Action Needed

Routine maintenance

River Hall CDD
Lake Treatment Report
Treatment Dates Dec 2025



Lake **4-1F**

Notes/Comments

No problem noted during my inspection

Action Needed

Routine maintenance



Lake **4-2J**

Notes/Comments

No problem noted during my inspection

Action Needed

Routine maintenance



Lake **FW2**

Notes/Comments

No problem noted during my inspection

Action Needed

Routine maintenance

RIVER HALL
COMMUNITY DEVELOPMENT DISTRICT

5

Alysa Ruiz Gonzalez

From: Charlie Krebs <ckrebs@bowman.com>
Sent: Monday, January 19, 2026 3:18 PM
To: Patrick F. Infante; shane willis
Subject: RE: [EXTERNAL] Corner of Hampton Blvd and RH Parkway before the gates

Pat,

If this is the northeast corner it is where the two right of ways come together. I believe the sidewalk is in the River Hall CDD portion of the intersection. The lights for the road are in the median islands.



If the Board would want to install additional lights it would need to be approved by Lee County.

CHARLIE KREBS, P.E.

Director, Civil Engineering | **BOWMAN**

O: (239) 985-1200 | D: (239) 985-1214 | M: (239) 910-3030

ckrebs@bowman.com

From: Patrick F. Infante <pat@pinfante.com>

Sent: Monday, January 19, 2026 2:51 PM

To: Charlie Krebs <ckrebs@bowman.com>; Shane Willis <williss@whhassociates.com>

Subject: [EXTERNAL] Corner of Hampton Blvd and RH Parkway before the gates

This is the corner near the entrance to Hampton Lakes from River Hall Parkway, but obviously well before the gates. Is this CDD property or Hampton Lakes? Residents have contacted me that their kids are standing in darkness waiting for the school buses in the morning.



RIVER HALL

COMMUNITY DEVELOPMENT DISTRICT

7

memo

To: River Hall Country Club
From: Bowman Consulting
CC:
Date: 8-21-2025
Re: River Hall Lake Investigation

Bowman Consulting Group LTD was requested by the River Hall Community Development District to evaluate the water management system for River Hall CDD. The primary objective was to evaluate shoreline stability, identify areas showing signs of erosion or structural degradation, and determine the necessity and priority of maintenance or restoration efforts. This assessment aimed to support long-term lake health, prevent property damage, and ensure compliance with environmental and aesthetic standards.

The River Hall community features 65 interconnected lakes, each exhibiting varying degrees of bank erosion. Figures 1 and 2 provide an aerial photograph of the project site, including lake designations. A comprehensive investigation of the lake banks was conducted on August 11th-19th, 2025, under low water level conditions during which all 65 lakes within the community were inspected. Each lake was evaluated based on the integrity of its bank, highlighting specific areas of concern related to erosion and slope instability. Lakes were classified into three categories based on shoreline condition: No Action, for stable banks requiring only routine monitoring, Maintenance, for localized erosion or minor washouts needing scheduled repairs, and Immediate Remediation, for severe erosion or significant washouts posing risks to stability or nearby infrastructure.

The purpose of this visit was to gauge a general assessment of shoreline conditions. During the inspections, the slopes along the lake banks were carefully examined, with particular attention given to the extent of erosion observed at both the top of the bank and the toe of the slope. Additional factors assessed included the health of shoreline vegetation, current water levels, and the presence of washouts caused by irrigation lines or roof leaders.

The recommendations presented in this report are intended to serve as general guidelines, offering a clear and informed overview of the varied shoreline conditions throughout the River Hall Lake system.

Figure 1: Location Map 1



Note: Lakes that have not been colored blue are either under construction or have not been turned over to the CDD for ongoing maintenance

Bowman

Figure 2: Location Map 2



Bowman

It is recommended that lake bank repair efforts begin as early as possible in the dry season—typically between mid-November and December—and be completed by late April. This schedule allows sufficient time for plantings, soil, and other stabilization measures to be established before the onset of the wet season. The dry season generally provides a five-month window each year for conducting repairs under more favorable, drier conditions.

Repair recommendations have been prioritized based on the degree of erosion, lake size, estimated costs, and the potential need for Development Order modifications or variances. The lakes have been grouped into three categories according to the urgency of repairs needed.

Category Level 1 – No Action

Low-priority or no action required (Category Level 1) applies to lakes which are currently stable but should be periodically monitored to ensure that conditions do not deteriorate over time. The lakes in Category 1 include:

- | | |
|--------|-------------------|
| - 1-2A | - 2-5D |
| - 1-2B | - 2-5C |
| - 1-3 | - 3-4C |
| - 1-4 | - Flow way Lake 2 |
| - 2-2L | - 3-3A |
| - 2-2M | - 3-5E |
| - 2-3B | - 4-1A |
| - 2-6A | - 4-1D |
| - 2-4A | - 4-2B |
| - 2-6B | - 4-1C |
| - 2-4C | - 4-1F |
| - 2-4E | - 4-2I |
| - 3-1 | - 4-2J |

A lake falls into Category 1 when its shoreline is stable and shows no significant signs of active erosion or structural distress. Banks typically maintain a gentle, uniform slope with continuous vegetative cover that provides natural stabilization. Minor cosmetic issues, such as small bare spots or slight surface irregularities, may be present but do not indicate progressive erosion. Protective measures, such as riprap or sod, remain intact and properly aligned, with no evidence of displacement or settlement. There are no abnormal washouts, undercutting, or concentrated flow paths along the shoreline. In this condition, the lake requires only routine monitoring as part of normal maintenance practices, with inspections recommended annually or following major storm events.

Category Level 2 – Moderate Priority Repairs

Moderate-priority repairs (Category Level 2) are recommended for lakes where erosion is present but is still compliant in most areas. The lakes in Category 2 include:

- | | |
|--------|--------|
| - 2-1A | - 3-5C |
| - 2-2K | - 4-2H |
| - 2-4D | - 2-5C |
| - 2-5A | - 2-2C |
| - 3-2 | - 2-2D |
| - 1-1A | - 2-2J |
| - 3-4A | - 2-2B |
| - 3-5D | |

A lake is classified as Category 2 – Maintenance when it exhibits moderate signs of shoreline distress that, while not immediately critical, indicate progressive erosion if left unaddressed. Typical conditions include localized undercutting or small escarpments ranging from approximately 6 to 12 inches in height, as well as intermittent sloughing along limited sections of the bank. Vegetative cover is often patchy, with exposed soil or shallow root mats beginning to detach, reducing the shoreline's natural stabilization. Protective measures such as riprap or sod may show isolated displacement or settlement, and minor gaps may appear in shoreline armoring. Hydrologic indicators, such as small rills or gullies formed by concentrated runoff, may be present near inlets or outfalls, signaling early-stage erosion pathways. Additionally, small abnormal washouts—typically less than 3 feet in diameter and under 1 foot deep—may occur, suggesting localized subsurface soil loss. While these conditions do not pose an immediate threat to infrastructure, they require scheduled maintenance within 6 to 12 months to prevent escalation into severe erosion or structural failure.

Category Level 3 – Immediate Remediation

High-priority repairs (Category Level 3) are required for lakes where significant erosion, vertical drop-offs, slope instability, or active washouts pose a risk to bank stability and surrounding infrastructure. The lakes in Category 3 include:

- | | |
|--------|--------|
| - 2-3A | - 4-1E |
| - 2-2A | - 4-1A |
| - 2-7 | |
| - 2-8B | |
| - 2-8C | |
| - 2-8E | |
| - 2-8F | |
| - 3-4B | |
| - 3-3 | |
| - 3-5A | |
| - 3-5B | |
| - 4-1B | |

A lake is classified as Category 3 when it exhibits severe and active erosion that poses an immediate risk to shoreline stability, water quality, or nearby infrastructure. Common indicators include large vertical scarps exceeding 12 inches, significant undercutting, or active sloughing and bank collapse. Vegetative cover is largely absent, leaving extensive areas of exposed soil vulnerable to further erosion. Protective systems, such as riprap or geotextile, may be widely displaced, settled, or completely failed. Hydrologic signs, such as deep gullies, head cuts at inlets, or severe toe scour, are often present. Large abnormal washouts—typically greater than 3 feet in diameter or more than 1 foot deep—may indicate subsurface piping or void formation, further compromising stability.

The following are the locations of Category 3 repairs

Bowman



Picture 1: >8" T.O.B erosion
(~72 LF)



Picture 2: >8" T.O.B erosion
(~100 LF)



Picture 3: >8" T.O.B erosion
(~160 LF)



Picture 4: >8" T.O.B erosion
(~780 LF)



Picture 5: >8" T.O.B erosion
(~230 LF)

Bowman

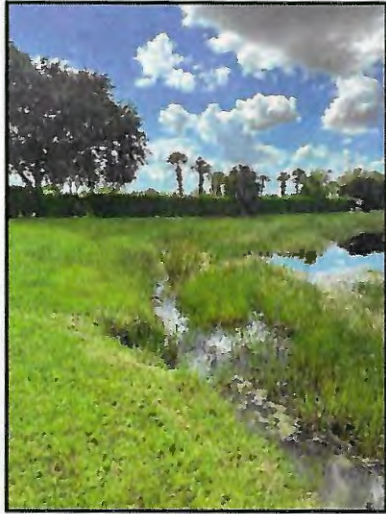
Lake 2-2A

This lake exhibits extensive top-of-bank (T.O.B.) erosion along its southeast, east, north, and west banks, indicating a dynamic and potentially unstable shoreline environment. The southeast corner was also observed to have abnormal areas of wash out with exposed wiring. The erosion is likely driven by a combination of natural processes such as wave action, fluctuating water levels, and possibly anthropogenic influences like altered drainage patterns or nearby development. The affected banks show signs of soil loss, undercutting, and potential vegetation displacement, which may contribute to sedimentation within the lake and impact water quality. Stabilization efforts may be necessary to prevent further degradation and to protect adjacent land uses and ecological habitats.

Figure 1: Lake 2-2A Aerial



Bowman



Picture 1: >1' deep washout

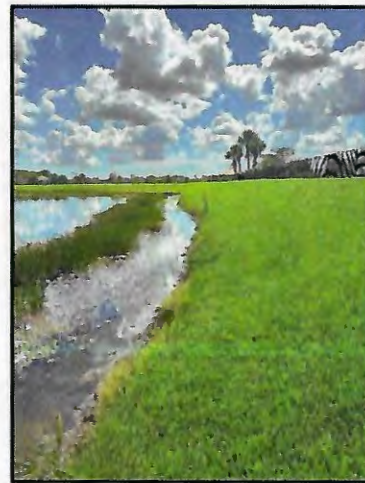


Picture 2: >1' deep washout



Picture 3: >8" T.O.B erosion

(~120 LF)



Picture 4: >8" T.O.B erosion

(~420 LF)

Lake 2-3A

The lake's south bank is significantly impacted by multiple large, abnormal washouts originating from residential roof drains located along the edges of private easements. These concentrated discharges have created pronounced erosion channels, undermined the bank structure and accelerated sediment transport into the lake. In addition to these washouts, both the south and north banks exhibit heavy top-of-bank (T.O.B.) erosion, characterized by soil loss, bank instability, and potential vegetation displacement. These conditions suggest a combination of poor stormwater management and natural erosive forces, which may threaten the long-term stability of the shoreline and adjacent properties. Mitigation strategies such as redirecting roof runoff, installing energy dissipation structures, and reinforcing the banks with native vegetation or engineered solutions may be necessary to restore and protect the lake's perimeter.

Figure 2: Lake 2-3A Aerial



Bowman



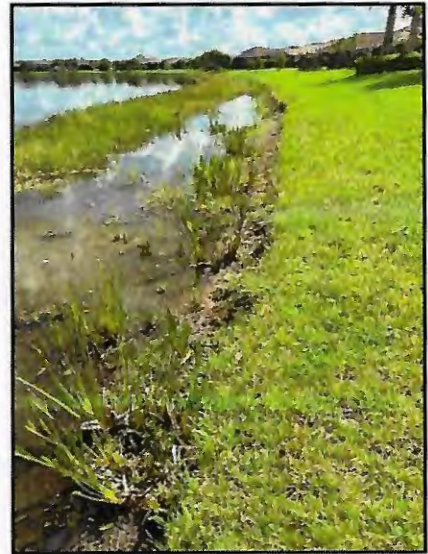
Picture 1: 6-8" T.O.B erosion



Picture 2: Large washout area



Picture 3: Large washout >1'



Picture 4: 6-8" T.O.B erosion

Bowman

Lake 2-7

The lake's west bank, southwest corner, and southeast corner are experiencing significant degradation due to multiple large washouts and heavy top-of-bank (T.O.B.) erosion. These areas show signs of severe soil displacement, likely caused by concentrated surface runoff and inadequate stormwater control. The washouts have created deep channels and exposed subsoil, contributing to shoreline instability and increased sedimentation in the lake. The T.O.B. erosion along these sections further indicates ongoing bank retreat and potential risk to nearby infrastructure or vegetation.

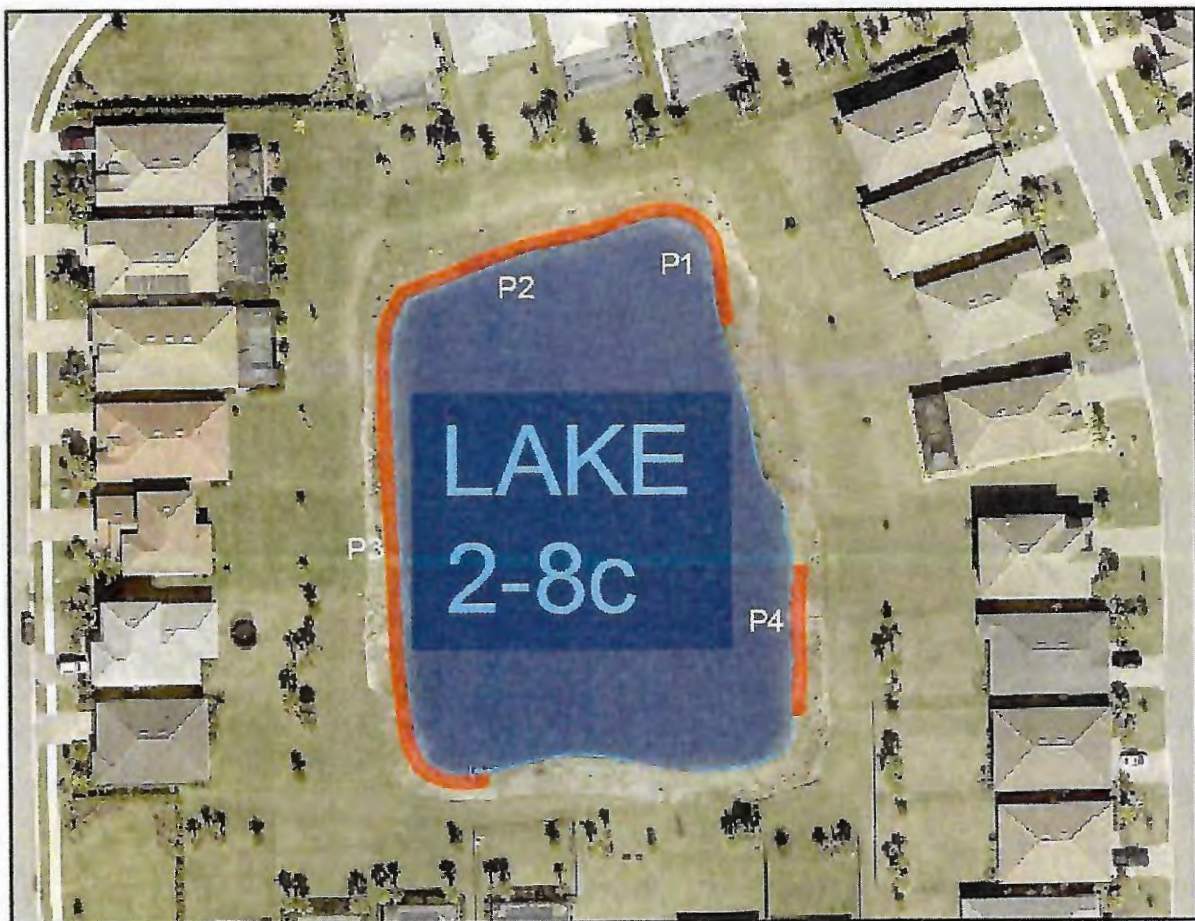
Figure 3: Lake 2-7 Aerial



Lake 2-8C

The lake exhibits significant shoreline instability, particularly at all four corners, where large washouts have developed. These washouts appear to be the result of concentrated surface runoff or poor drainage control, leading to severe soil displacement and localized bank failure. In addition, the north and west banks are experiencing moderate to heavy top-of-bank (T.O.B.) erosion, characterized by progressive bank retreat, exposed roots, and loss of vegetative cover. These conditions suggest ongoing hydrological stress and may pose risks to nearby infrastructure and water quality. Targeted erosion control measures and improved stormwater management are recommended to mitigate further damage and restore shoreline stability. These patterns persist along the vast majority of the lake's perimeter.

Figure 4: Lake 2-8C Aerial



Bowman

Figure 5: Lake 2-8C Aerial



Picture 1: Large washout



Picture 2: Receding bank



Picture 3: 6-8" T.O.B erosion

(~260 LF)



Picture 4: Washout from roof leader

Bowman



Picture 1: >8" T.O.B erosion
(~160 LF)



Picture 2: Large washout



Picture 3: 6-8" T.O.B erosion
(~418 LF)



Picture 4: >8" T.O.B erosion
(~600 LF)

Bowman

Lake 2-8B

The lake exhibits significant shoreline instability, particularly along its southeast, west, and northeast banks, where heavy top-of-bank (T.O.B.) erosion is clearly present. These areas show signs of active soil loss, undercutting, and potential slope failure. Additionally, two large washouts have formed along the north shoreline, further exacerbating sediment transport into the lake and contributing to water quality degradation. These conditions indicate a need for immediate assessment and the implementation of targeted erosion mitigation strategies to preserve bank integrity and protect surrounding infrastructure.

Figure 6: Lake 2-8B Aerial



Bowman



Picture 1: Large erosion trails >20' wide



Picture 2: Large erosion trails >20' wide



Picture 3: >1' deep washout

Bowman

Lake 2-8E

This lake is experiencing severe shoreline degradation, particularly due to multiple very large, abnormal washouts ranging from 1 to 2 feet or more in depth. These washouts originate from residential roof drains that discharge directly toward the lake, creating concentrated flow paths that have carved into the banks. The corners of the lake also show visible washout trails, indicating widespread surface runoff issues and poor stormwater dispersion. In addition to the washouts, there is clear evidence of top-of-bank (T.O.B.) erosion along several major shoreline segments. These eroded areas show signs of soil instability, undercutting, and potential slope failure, which may threaten nearby structures and contribute to sediment loading in the lake. Notably, the lake lacks littoral vegetation, which would typically help stabilize the shoreline, filter runoff, and provide ecological benefits. The absence of littorals further exacerbates erosion and reduces the lake's natural resilience to stormwater impacts.

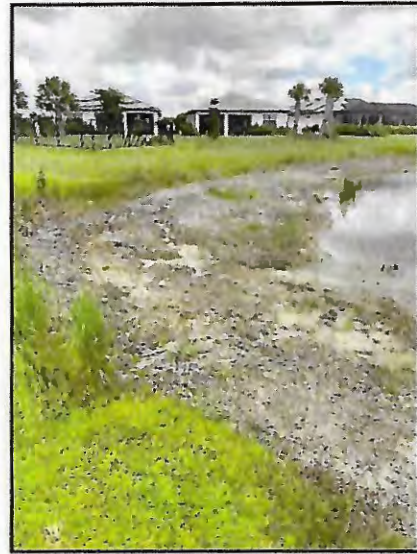
Figure 7: Lake 2-8E Aerial



Bowman



Picture 4: Large washout



Picture 5: 6-8" T.O.B erosion



Picture 6: Large washout trails



Picture 7: >1' deep washout

Lake 2-8F

This lake is experiencing severe shoreline degradation, primarily due to multiple very large, abnormal washouts—ranging from 1 to 2 feet or more in depth—originating from residential roof drains. These concentrated discharges have created deep erosion channels that cut through the banks, destabilizing the shoreline and contributing to sedimentation within the lake. Additional signs of washout trails are present at several corners of the lake, indicating widespread surface runoff issues and poor stormwater dispersion. Furthermore, there is clear evidence of top-of-bank (T.O.B.) erosion along multiple shoreline segments. These eroded areas show signs of active soil loss, undercutting, and potential slope failure. Compounding these issues is the complete absence of littoral vegetation.

Figure 8: Lake 2-8F Aerial



Bowman



Picture 4: >1-2' deep washout



Picture 5: >1" deep washout



Picture 6: Large washout area



Picture 7: >1" deep washout

Bowman



Picture 1: >8" T.O.B erosion



Picture 2: 1-2" deep washout



Picture 3: Large length of washout

Bowman



Picture 1: 1-2' deep washout



Picture 2: >8" T.O.B erosion

(~193 LF)



Picture 3: Large washout
washout



Picture 4: Light erosion with

Bowman

Lake 3-3

This lake is experiencing widespread shoreline instability, with a large portion of its perimeter affected by significant top-of-bank (T.O.B.) erosion. In many areas, erosion exceeds 8 inches in depth, indicating ongoing soil loss and potential slope failure. These conditions suggest that the shoreline is highly vulnerable to further degradation, especially during periods of heavy rainfall or increased runoff. In addition to the T.O.B. erosion, there are multiple areas along the shoreline where large washouts have formed, each with depths greater than 1 foot. These washouts are likely the result of concentrated stormwater flow or poor drainage management, and they contribute to sedimentation and reduced water quality within the lake. The combination of extensive erosion and deep washouts poses a risk to both the structural integrity of the shoreline and the surrounding environment.

Figure 10: Lake 3-3 Aerial



Bowman

Lake 3-5A

The lake exhibits significant erosion along its southwest corner and the entire northern bank, with soil loss exceeding 8 inches in depth in these areas. Additionally, a large washout is present, measuring over 1 foot in depth, indicating severe localized erosion and potential instability of the shoreline. These conditions suggest a need for immediate assessment and remediation to prevent further degradation and protect surrounding land and water quality.

Figure 11: Lake 3-5A



Bowman



Picture 5: >8" T.O.B erosion

(~166 LF)



Picture 6: >1' deep washout



Picture 7: >8" T.O.B erosion

(~388 LF)

Bowman

Lake 3-5B

The lake exhibits severe shoreline degradation characterized by continuous erosion along the majority of the west and south banks, with measured vertical soil loss exceeding 8 inches. Three significant washout zones were identified: one located on the west bank, attributed to concentrated discharge from a residential sprinkler head, and two additional washouts along the south bank resulting from localized hydraulic erosion. These conditions indicate compromised bank stability and elevated risk of progressive shoreline failure.

Figure 12: Lake 3-5B Aerial



Bowman



Picture 1: Steep slope along southwest corner



Picture 2: >8" T.O.B erosion



Picture 3: >8" T.O.B erosion ; steep bank slope



Picture 4: >1' deep washout

Bowman

Lake 4-1B

The lake exhibits moderate to heavy shoreline erosion along the majority of its perimeter, with the most severe degradation concentrated on the eastern section of the north bank. Multiple washout zones are present, including one particularly large washout on the western bank. These conditions indicate widespread bank instability and localized failure points, likely exacerbated by surface runoff and hydraulic forces.

Figure 13: Lake 4-1B Aerial



Bowman



Picture 1: Large sprinkler washout



Picture 2: >8" T.O.B erosion



Picture 3: >8" T.O.B erosion



Picture 4: >8" T.O.B erosion



Picture 5: Large washout



Picture 6: >1' deep washout

Lake 4-1E

The lake exhibits significant top-of-bank (TOB) erosion along the majority of its western and northern shorelines. The erosion is characterized by steep, undercut banks with visible soil loss and minimal vegetative stabilization. In several areas, the bank has receded noticeably, exposing root systems and creating unstable conditions. Sediment deposition is evident near the waterline, suggesting active soil displacement into the lake. These conditions indicate a high risk of continued bank failure without intervention.

Figure 14: Lake 4-1E Aerial



Bowman



Picture 1: Disconnected PVC yard drain



Picture 2: >8" T.O.B erosion



Picture 3: Large washout within bank



Picture 4: Washout trails



Picture 5: Washout forming under bank



Picture 6: Large washout from irrigation

Lake 4-1A

The lake exhibits severe shoreline instability, with multiple abnormal large-scale washouts concentrated along the eastern and western banks. These washouts have resulted in significant soil displacement and localized bank collapse, creating irregular shoreline contours. In addition, there is heavy top-of-bank (TOB) erosion present along the majority of the shoreline perimeter, characterized by undercut banks, loss of vegetative cover, and active soil sloughing. These conditions indicate advanced erosion processes and a high potential for continued shoreline degradation without corrective measures.

Figure 15: Lake 4-1A Aerial



Bowman



Picture 1: >8" T.O.B erosion



Picture 2: >8" T.O.B erosion with washout



Picture 3: >8" T.O.B erosion with washout



Picture 4: Washout trails

Bowman



Picture 1: Large washout with TOB erosion



Picture 2: Large washout with TOB erosion



Picture 3: Forming washout trails



Picture 4: Large washout with TOB erosion



Picture 5: Large washout



Picture 6: Steep side slope

RIVER HALL
COMMUNITY DEVELOPMENT DISTRICT

UNAUDITED
FINANCIAL
STATEMENTS

**RIVER HALL
COMMUNITY DEVELOPMENT DISTRICT
FINANCIAL STATEMENTS
UNAUDITED
DECEMBER 31, 2025**

**RIVER HALL
COMMUNITY DEVELOPMENT DISTRICT
BALANCE SHEET
GOVERNMENTAL FUNDS
DECEMBER 31, 2025**

	General Fund	Debt Service Fund Series 2020A	Debt Service Fund Series 2021	Debt Service Fund Series 2023A	Debt Service Fund Series 2024	Capital Projects Fund Series 2020A	Capital Projects Fund Series 2023A	Capital Projects Fund Series 2024	Total Governmental Funds
ASSETS									
SunTrust	\$2,905,449	\$ -	\$ -	\$ -	\$ -	\$ -	\$ -	\$ -	\$ 2,905,449
Bank United MMA	90,000	-	-	-	-	-	-	-	90,000
Bank United ICS	263,659	-	-	-	-	-	-	-	263,659
Investments									
SBA	6,240	-	-	-	-	-	-	-	6,240
Reserve A-1	-	-	75,400	-	-	-	-	-	75,400
Reserve A-2	-	-	342,063	-	-	-	-	-	342,063
Reserve	-	206,925	-	660,074	242,533	-	-	-	1,109,532
Capitalized interest	-	-	-	-	13	-	-	-	13
Revenue A-1	-	-	226,261	-	-	-	-	-	226,261
Revenue A-2	-	-	110,310	-	-	-	-	-	110,310
Revenue	-	92,545	-	26,470	13,622	-	-	-	132,637
Prepayment A-1	-	-	74	-	-	-	-	-	74
Prepayment A-2	-	-	476,071	-	-	-	-	-	476,071
Prepayment	-	171	-	-	-	-	-	-	171
Construction	-	-	-	-	-	1	148	1,216	1,365
Due from other governments	-	-	-	-	237,567	-	-	-	237,567
Due from general fund	-	369,671	1,206,545	538,565	-	-	-	-	2,114,781
Deposits	1,622	-	-	-	-	-	-	-	1,622
Ashton oaks HOA	3,800	-	-	-	-	-	-	-	3,800
River hall country club HOA	3,800	-	-	-	-	-	-	-	3,800
RH Golf, LLC.	9,137	-	-	-	-	-	-	-	9,137
Total assets	<u>\$3,283,707</u>	<u>\$ 669,312</u>	<u>\$ 2,436,724</u>	<u>\$ 1,225,109</u>	<u>\$ 493,735</u>	<u>\$ 1</u>	<u>\$ 148</u>	<u>\$ 1,216</u>	<u>\$ 8,109,952</u>
LIABILITIES AND FUND BALANCES									
Liabilities:									
Accounts payable	\$ 44,661	\$ -	\$ -	\$ -	\$ -	\$ -	\$ -	\$ -	\$ 44,661
Due to debt service fund 2020A	369,671	-	-	-	-	-	-	-	369,671
Due to debt service fund 2021A1	672,643	-	-	-	-	-	-	-	672,643
Due to debt service fund 2021A2	533,902	-	-	-	-	-	-	-	533,902
Due to debt service fund 2023	538,565	-	-	-	-	-	-	-	538,565
Total liabilities	<u>2,159,442</u>	<u>-</u>	<u>-</u>	<u>-</u>	<u>-</u>	<u>-</u>	<u>-</u>	<u>-</u>	<u>2,159,442</u>
DEFERRED INFLOWS OF RESOURCES									
Deferred receipts	16,737	-	-	-	-	-	-	-	16,737
Total deferred inflows of resources	<u>16,737</u>	<u>-</u>	<u>-</u>	<u>-</u>	<u>-</u>	<u>-</u>	<u>-</u>	<u>-</u>	<u>16,737</u>
Fund balances:									
Nonspendable									
Prepaid and deposits	1,622	-	-	-	-	-	-	-	1,622
Restricted for:									
Debt service	-	669,312	2,436,724	1,225,109	493,735	-	-	-	4,824,880
Capital projects	-	-	-	-	-	1	148	1,216	1,365
Assigned to:									
Operating capital	185,000	-	-	-	-	-	-	-	185,000
Disaster recovery	250,000	-	-	-	-	-	-	-	250,000
Unassigned	670,906	-	-	-	-	-	-	-	670,906
Total fund balances	<u>1,107,528</u>	<u>669,312</u>	<u>2,436,724</u>	<u>1,225,109</u>	<u>493,735</u>	<u>1</u>	<u>148</u>	<u>1,216</u>	<u>5,933,773</u>
Total liabilities, deferred inflows of resources and fund balances	<u>\$ 3,283,707</u>	<u>\$ 669,312</u>	<u>\$ 2,436,724</u>	<u>\$ 1,225,109</u>	<u>\$ 493,735</u>	<u>\$ 1</u>	<u>\$ 148</u>	<u>\$ 1,216</u>	<u>\$ 8,109,952</u>

**RIVER HALL
COMMUNITY DEVELOPMENT DISTRICT
GENERAL FUND
STATEMENT OF REVENUES, EXPENDITURES,
AND CHANGES IN FUND BALANCES
FOR THE PERIOD ENDED DECEMBER 31, 2025**

	Current Month	Year to Date	Budget	% of Budget
REVENUES				
Assessment levy: on-roll: net	\$ 430,024	\$ 509,528	566,812	90%
Assessment levy: off-roll	75,313	75,313	150,627	50%
Miscellaneous hog program shared cost	-	-	19,000	0%
Interest and miscellaneous	1,135	4,254	7,500	57%
Total revenues	<u>506,472</u>	<u>589,095</u>	<u>743,939</u>	79%
EXPENDITURES				
Legislative				
Supervisor	800	2,800	12,000	23%
<i>Financial & administrative</i>				
District management	3,750	11,250	45,000	25%
District engineer	2,151	5,797	25,000	23%
Trustee	8,492	20,801	16,500	126%
Tax collector/property appraiser	-	4,574	7,200	64%
Assessment roll prep	375	1,125	4,500	25%
Auditing services	-	-	3,300	0%
Arbitrage rebate calculation	-	-	650	0%
Public officials liability insurance	-	14,816	15,750	94%
Legal advertising	-	-	1,100	0%
Bank fees	103	439	350	125%
Dues, licenses & fees	-	175	175	100%
Postage	101	101	1,500	7%
ADA website compliance	-	-	210	0%
Website maintenance	-	-	705	0%
EMMA software services	-	3,000	-	N/A
<i>Legal counsel</i>				
District counsel	1,205	1,205	14,000	9%
<i>Electric utility services</i>				
Utility services	1,871	2,772	11,000	25%
Street lights	158	325	2,000	16%
<i>Stormwater control</i>				
Fountain service repairs & maintenance	-	-	7,500	0%
Aquatic maintenance	13,739	27,478	160,000	17%
Hog removal	1,900	3,800	22,800	17%
Lake/pond bank maintenance	-	-	5,000	0%
Stormwater system maintenance	-	-	40,000	0%

**RIVER HALL
COMMUNITY DEVELOPMENT DISTRICT
GENERAL FUND
STATEMENT OF REVENUES, EXPENDITURES,
AND CHANGES IN FUND BALANCES
FOR THE PERIOD ENDED DECEMBER 31, 2025**

	Current Month	Year to Date	Budget	% of Budget
<i>Other physical environment</i>				
General liability insurance	-	5,270	5,200	101%
Property insurance	-	11,224	13,500	83%
Entry & walls maintenance	-	14,285	13,750	104%
Landscape maintenance	31,055	46,997	206,000	23%
Irrigation repairs & maintenance	-	-	5,000	0%
Landscape replacement plants, shrubs, trees	-	-	20,000	0%
Annual mulching	-	-	10,500	0%
Holiday decorations	-	5,750	11,500	50%
Clock tower maintenance	-	-	1,750	0%
Ornamental lighting & maintenance	-	-	2,000	0%
<i>Road & street facilities</i>				
Street/parking lot sweeping	750	750	900	83%
Street light/decorative light maintenance	3,104	3,104	3,500	89%
Roadway repair & maintenance	1,500	1,500	25,000	6%
Sidewalk repair & maintenance	-	-	5,000	0%
Street sign repair & replacement	-	-	1,500	0%
Off-duty sheriff patrol	3,070	6,754	15,000	45%
<i>Contingency</i>				
Miscellaneous contingency	-	-	1,000	0%
Total expenditures	<u>74,124</u>	<u>196,092</u>	<u>737,340</u>	27%
Excess/(deficiency) of revenues over/(under) expenditures	432,348	393,003	6,599	
Fund balances - beginning	675,180	714,525	863,501	
Assigned				
Operating capital	185,000	185,000	185,000	
Disaster recovery	250,000	250,000	250,000	
Parkways repave and striping	400,000	400,000	400,000	
Unassigned	272,528	272,528	35,100	
Fund balances - ending	<u>\$ 1,107,528</u>	<u>\$ 1,107,528</u>	<u>\$ 870,100</u>	

**RIVER HALL
COMMUNITY DEVELOPMENT DISTRICT
STATEMENT OF REVENUES, EXPENDITURES,
AND CHANGES IN FUND BALANCES
DEBT SERVICE FUND SERIES 2020A
FOR THE PERIOD ENDED DECEMBER 31, 2025**

	Current Month	Year To Date	Budget	% of Budget
REVENUES				
Special assessment: on-roll	\$ 314,814	\$ 369,671	\$ 414,720	89%
Interest	908	3,580	-	N/A
Total revenues	<u>315,722</u>	<u>373,251</u>	<u>414,720</u>	90%
EXPENDITURES				
Debt service				
Principal	-	-	160,000	0%
Interest	-	125,975	251,950	50%
Total expenditures	<u>-</u>	<u>125,975</u>	<u>411,950</u>	31%
Excess/(deficiency) of revenues over/(under) expenditures	315,722	247,276	2,770	
Fund balances - beginning	353,590	422,036	408,398	
Fund balances - ending	<u>\$ 669,312</u>	<u>\$ 669,312</u>	<u>\$ 411,168</u>	

**RIVER HALL
COMMUNITY DEVELOPMENT DISTRICT
STATEMENT OF REVENUES, EXPENDITURES,
AND CHANGES IN FUND BALANCES
DEBT SERVICE FUND SERIES 2021
FOR THE PERIOD ENDED DECEMBER 31, 2025**

	Current Month	Year To Date	Budget	% of Budget
REVENUES				
Special assessment: on-roll	\$ 1,027,505	\$ 1,206,544	\$ 1,357,204	89%
Special assessment: off-roll	35,577	35,577	71,154	50%
Interest	3,552	12,322	-	N/A
Total revenues	<u>1,066,634</u>	<u>1,254,443</u>	<u>1,428,358</u>	88%
EXPENDITURES				
Debt service				
Principal (A-1)	-	-	545,000	0%
Principal (A-2)	-	-	460,000	0%
Interest (A-1)	-	105,375	210,750	50%
Interest (A-2)	-	96,675	179,850	54%
Total expenditures	<u>-</u>	<u>202,050</u>	<u>1,395,600</u>	14%
Excess/(deficiency) of revenues over/(under) expenditures	1,066,634	1,052,393	32,758	
Fund balances - beginning	<u>1,370,090</u>	<u>1,384,331</u>	<u>893,383</u>	
Fund balances - ending	<u><u>\$ 2,436,724</u></u>	<u><u>\$ 2,436,724</u></u>	<u><u>\$ 926,141</u></u>	

**RIVER HALL
COMMUNITY DEVELOPMENT DISTRICT
STATEMENT OF REVENUES, EXPENDITURES,
AND CHANGES IN FUND BALANCES
DEBT SERVICE FUND SERIES 2023A
FOR THE PERIOD ENDED DECEMBER 31, 2025**

	Current Month	Year To Date	Budget	% of Budget
REVENUES				
Special assessment: on-roll	\$ 458,647	\$ 538,565	\$ 604,169	89%
Interest	2,068	7,962	-	N/A
Total revenues	<u>460,715</u>	<u>546,527</u>	<u>604,169</u>	90%
EXPENDITURES				
Debt service				
Principal	-	-	100,000	0%
Interest	-	251,075	502,150	50%
Total expenditures	<u>-</u>	<u>251,075</u>	<u>602,150</u>	42%
Excess/(deficiency) of revenues over/(under) expenditures	460,715	295,452	2,019	
Fund balances - beginning	764,394	929,657	904,842	
Fund balances - ending	<u>\$ 1,225,109</u>	<u>\$ 1,225,109</u>	<u>\$ 906,861</u>	

**RIVER HALL
COMMUNITY DEVELOPMENT DISTRICT
STATEMENT OF REVENUES, EXPENDITURES,
AND CHANGES IN FUND BALANCES
DEBT SERVICE FUND SERIES 2024
FOR THE PERIOD ENDED DECEMBER 31, 2025**

	Current Month	Year To Date	Budget	% of Budget
REVENUES				
Special assessment: off-roll	\$ 237,567	\$ 237,567	475,135	50%
Interest	858	3,880	-	N/A
Total revenues	<u>238,425</u>	<u>241,447</u>	<u>475,135</u>	51%
EXPENDITURES				
Debt service				
Principal	-	-	100,000	0%
Interest	-	188,273	376,546	50%
Total expenditures	<u>-</u>	<u>188,273</u>	<u>476,546</u>	40%
Excess/(deficiency) of revenues over/(under) expenditures	238,425	53,174	(1,411)	
Fund balances - beginning	255,310	440,561	438,195	
Fund balances - ending	<u>\$ 493,735</u>	<u>\$ 493,735</u>	<u>\$ 436,784</u>	

**RIVER HALL
COMMUNITY DEVELOPMENT DISTRICT
STATEMENT OF REVENUES, EXPENDITURES,
AND CHANGES IN FUND BALANCES
CAPITAL PROJECTS FUND SERIES 2020A
FOR THE PERIOD ENDED DECEMBER 31, 2025**

	Current Month	Year To Date
REVENUES	<u>\$ -</u>	<u>\$ -</u>
Total revenues	<u>-</u>	<u>-</u>
EXPENDITURES	<u>-</u>	<u>-</u>
Total expenditures	<u>-</u>	<u>-</u>
Excess/(deficiency) of revenues over/(under) expenditures	-	-
Fund balances - beginning	1	1
Fund balances - ending	<u><u>\$ 1</u></u>	<u><u>\$ 1</u></u>

**RIVER HALL
COMMUNITY DEVELOPMENT DISTRICT
STATEMENT OF REVENUES, EXPENDITURES,
AND CHANGES IN FUND BALANCES
CAPITAL PROJECTS FUND SERIES 2023A
FOR THE PERIOD ENDED DECEMBER 31, 2025**

	Current Month	Year To Date
REVENUES		
Interest income	\$ -	\$ 1
Total revenues	<u>-</u>	<u>1</u>
EXPENDITURES	<u>-</u>	<u>-</u>
Total expenditures	<u>-</u>	<u>-</u>
Excess/(deficiency) of revenues over/(under) expenditures	-	1
Fund balances - beginning	148	147
Fund balances - ending	<u><u>\$ 148</u></u>	<u><u>\$ 148</u></u>

**RIVER HALL
COMMUNITY DEVELOPMENT DISTRICT
STATEMENT OF REVENUES, EXPENDITURES,
AND CHANGES IN FUND BALANCES
CAPITAL PROJECTS FUND SERIES 2024
FOR THE PERIOD ENDED DECEMBER 31, 2025**

	Current Month	Year To Date
REVENUES		
Interest income	\$ 4	\$ 12
Total revenues	<u>4</u>	<u>12</u>
EXPENDITURES	<u>-</u>	<u>-</u>
Total expenditures	<u>-</u>	<u>-</u>
Excess/(deficiency) of revenues over/(under) expenditures	4	12
Fund balances - beginning	1,212	1,204
Fund balances - ending	<u><u>\$ 1,216</u></u>	<u><u>\$ 1,216</u></u>

River Hall Community Development District

Check Detail

December 2025

Type	Num	Date	Name	Account	Paid Amount	Original Amount
Bill Pmt -Check	0	12/03/2025	FPL	101.001 · Suntrust-...		-999.64
Bill	02979-06091 111825	12/02/2025		531.437 · Street Lig...	-157.50	157.50
Bill	82155-24268 111825	12/02/2025		531.431 · Utility Ser...	-842.14	842.14
TOTAL					-999.64	999.64
Bill Pmt -Check	3721	12/03/2025	COLEMAN, YOVA...	101.001 · Suntrust-...		-553.00
Bill	16581-001M 66	12/02/2025		514.100 · Legal Fee...	-553.00	553.00
TOTAL					-553.00	553.00
Bill Pmt -Check	3722	12/03/2025	COLLIER PAVING ...	101.001 · Suntrust-...		-1,500.00
Bill	14086	12/02/2025		541.462 · Roadway ...	-1,500.00	1,500.00
TOTAL					-1,500.00	1,500.00
Bill Pmt -Check	3723	12/03/2025	FL GIS SOLUTION...	101.001 · Suntrust-...		-1,080.00
Bill	1711	12/02/2025		519.320 · Engineeri...	-1,080.00	1,080.00
TOTAL					-1,080.00	1,080.00
Bill Pmt -Check	3724	12/03/2025	LEE COUNTY SHE...	101.001 · Suntrust-...		-1,228.00
Bill	37483	12/02/2025		541.466 · Off-duty s...	-1,228.00	1,228.00
TOTAL					-1,228.00	1,228.00
Bill Pmt -Check	3725	12/03/2025	SWINE SOLUTIONS	101.001 · Suntrust-...		-3,800.00
Bill	653	09/30/2025		538.465 · Hog Rem...	-1,900.00	1,900.00
Bill	671	12/02/2025		538.465 · Hog Rem...	-1,900.00	1,900.00
TOTAL					-3,800.00	3,800.00
Check	3726	12/17/2025	PAUL ASFOUR	101.001 · Suntrust-...		-200.00
				511.110 · Board of ...	-200.00	200.00
TOTAL					-200.00	200.00

River Hall Community Development District
Check Detail
December 2025

Type	Num	Date	Name	Account	Paid Amount	Original Amount
Check	3727	12/17/2025	ROBERT H. CUNNI...	101.001 · Suntrust-...		-200.00
				511.110 · Board of ...	-200.00	200.00
TOTAL					-200.00	200.00
Check	3728	12/17/2025	KENNETH MITCHE...	101.001 · Suntrust-...		-200.00
				511.110 · Board of ...	-200.00	200.00
TOTAL					-200.00	200.00
Check	3729	12/17/2025	DANIEL J BLOCK	101.001 · Suntrust-...		-200.00
				511.110 · Board of ...	-200.00	200.00
TOTAL					-200.00	200.00
Bill Pmt -Check	3730	12/17/2025	BOWMAN	101.001 · Suntrust-...		-1,071.00
Bill	533517	12/16/2025		9999999 · Uncoded...	-1,071.00	1,071.00
TOTAL					-1,071.00	1,071.00
Bill Pmt -Check	3731	12/17/2025	COLEMAN, YOVA...	101.001 · Suntrust-...		-651.75
Bill	16581-001M 67	12/16/2025		514.100 · Legal Fee...	-651.75	651.75
TOTAL					-651.75	651.75
Bill Pmt -Check	3732	12/17/2025	GULFSCAPES LA...	101.001 · Suntrust-...		-25,230.00
Bill	348624	12/02/2025		539.464 · Landscap...	-25,230.00	25,230.00
TOTAL					-25,230.00	25,230.00
Bill Pmt -Check	3733	12/17/2025	LEE COUNTY SHE...	101.001 · Suntrust-...		-614.00
Bill	37611	12/16/2025		541.466 · Off-duty s...	-614.00	614.00
TOTAL					-614.00	614.00
Bill Pmt -Check	3734	12/17/2025	P & T LAWN & TR...	101.001 · Suntrust-...		-5,825.00

River Hall Community Development District
Check Detail
December 2025

Type	Num	Date	Name	Account	Paid Amount	Original Amount
Bill	25-1470	12/16/2025		539.464 · Landscap...	-5,825.00	5,825.00
TOTAL					-5,825.00	5,825.00
Bill Pmt -Check	3735	12/17/2025	US BANK	101.001 · Suntrust-...		-8,492.50
Bill	7977629	12/16/2025		513.313 · Trustee F...	-4,246.25	4,246.25
Bill	7979751	12/16/2025		513.313 · Trustee F...	-4,246.25	4,246.25
TOTAL					-8,492.50	8,492.50
Bill Pmt -Check	3736	12/17/2025	WRATHELL, HUNT...	101.001 · Suntrust-...		-4,125.00
Bill	2026-0434	12/16/2025		512.311 · Managem...	-3,750.00	3,750.00
				513.310 · Assessm...	-375.00	375.00
TOTAL					-4,125.00	4,125.00
Check	3737	12/17/2025	RIVER HALL CDD	101.001 · Suntrust-...		-35,576.97
				207.205 · Due to Se...	-35,576.97	35,576.97
TOTAL					-35,576.97	35,576.97

**Electric Bill Statement****For:** Oct 21, 2025 to Nov 18, 2025 (28 days)**Statement Date:** Nov 18, 2025**Account Number:** 02979-06091**Service Address:**

2501 RIVER HALL PKWY # ST LTS

ALVA, FL 33920

RIVER HALL COMMUNITY DEVELOPMENT,
Here's what you owe for this billing period.

CURRENT BILL**\$157.50**

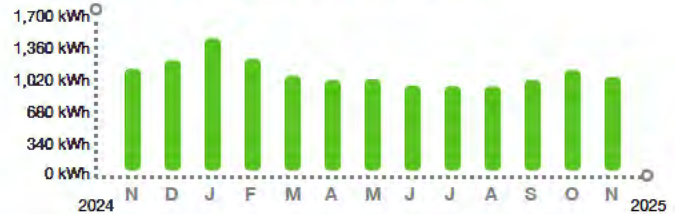
TOTAL AMOUNT YOU OWE

Dec 9, 2025

NEW CHARGES DUE BY



Scan to
Pay
or visit
[FPL.com/
WaystoPay](https://FPL.com/WaystoPay)

ENERGY USAGE HISTORY**BILL SUMMARY**

Amount of your last bill	167.83
Payments received	-167.83
Balance before new charges	0.00
Total new charges	157.50
Total amount you owe	\$157.50

(See page 2 for bill details.)

KEEP IN MIND

- Payment received after February 10, 2026 is considered LATE; a late payment charge of 1% will apply.

531.437

001

Customer Service: 1-800-375-2434
Outside Florida: 1-800-226-3545

Report Power Outages:
Hearing/Speech Impaired:

1-800-4OUTAGE (468-8243)
711 (Relay Service)

**Ways to Pay**

/ 27

5314029790609180575100000

RIVER HALL COMMUNITY
DEVELOPMENT
2300 GLADES RD STE 410W
BOCA RATON FL 33431-8556

The amount enclosed includes
the following donation:

FPL Care To Share: _____

Make check payable to FPL
in U.S. funds and mail along with
this coupon to:

FPL
GENERAL MAIL FACILITY
MIAMI FL 33188-0001

Visit FPL.com/PayBill
for ways to pay.

02979-06091

ACCOUNT NUMBER

\$157.50

TOTAL AMOUNT YOU OWE

Dec 9, 2025

NEW CHARGES DUE BY

\$

AMOUNT ENCLOSED



Customer Name: Account Number:
RIVER HALL COMMUNITY DEVELOPMENT 02979-06091

FPL.com Page 2

E001

BILL DETAILS

Amount of your last bill	167.83
Payment received - Thank you	-167.83
Balance before new charges	\$0.00

New Charges

Rate: GS-1 GENERAL SVC NON-DEMAND / BUSINESS

Base charge: \$12.87

Non-fuel: (\$0.096100 per kWh) \$104.18

Fuel: (\$0.027180 per kWh) \$29.46

Electric service amount 146.51

Gross receipts tax (State tax) 3.76

Franchise fee (Reqd local fee) 7.10

Taxes and charges 10.86

Regulatory fee (State fee) 0.13

Total new charges \$157.50

Total amount you owe \$157.50

METER SUMMARY

Meter reading - Meter KG85078. Next meter reading Dec 17, 2025.

Usage Type	Current	-	Previous	=	Usage
kWh used	54715		53631		1084

ENERGY USAGE COMPARISON

	This Month	Last Month	Last Year
Service to	Nov 18, 2025	Oct 21, 2025	Nov 19, 2024
kWh Used	1084	1162	1176
Service days	28	32	29
kWh/day	38	36	40
Amount	\$157.50	\$167.83	\$155.07

KEEP IN MIND

- Taxes, fees, and charges on your bill are determined and required by your local and state government to be used at their discretion.
- The fuel charge represents the cost of fuel used to generate electricity. It is a direct pass-through to customers. FPL does not profit from fuel, although higher costs do result in higher state and local taxes and fees.

Download the app

Get instant, secure access to outage and billing info from your mobile device.

[Download now](#)

Bigger LED rebates

Don't miss out on our increased rebates up to \$40 per qualifying LED fixture when you make the switch.

[Claim rebates](#)

When you pay by check, you authorize FPL to process your payment electronically or as a draft. If your payment is processed electronically, your checking account may be debited on the same day we receive the check and your check will not be returned with your checking account statement. FPL does not agree to any restrictions, conditions or endorsements placed on any bill statement or payments such as check, money order or other forms of payment. We will process the payment as if these restrictions or conditions do not exist.

**Electric Bill Statement****For:** Oct 21, 2025 to Nov 18, 2025 (28 days)**Statement Date:** Nov 18, 2025**Account Number:** 82155-24268**Service Address:**2401 RIVER HALL PKWY # FOUNTN
ALVA, FL 33920**RIVER HALL COMMUNITY DEVELOPMENT,**
Here's what you owe for this billing period.**CURRENT BILL****\$842.14**

TOTAL AMOUNT YOU OWE

Dec 9, 2025

NEW CHARGES DUE BY

Pay \$828.67 instead
of \$842.14 by your
due date to enroll in
FPL Budget Billing®.
FPL.com/BB**ENERGY USAGE HISTORY****BILL SUMMARY**

Amount of your last bill	900.46
Payments received	-900.46
Balance before new charges	0.00
Total new charges	842.14
Total amount you owe	\$842.14

(See page 2 for bill details.)

KEEP IN MIND

- Enroll now in FPL Budget Billing when you pay \$828.67 by your due date instead of \$842.14. Make your bills easier to manage with more predictable payments. Learn more at [FPL.com/BB](https://www.fpl.com/BB)
- Payment received after February 10, 2026 is considered LATE; a late payment charge of 1% will apply.

531.431

001

Customer Service: 1-800-375-2434
Outside Florida: 1-800-226-3545Report Power Outages:
Hearing/Speech Impaired:1-800-4OUTAGE (468-8243)
711 (Relay Service)**Ways to Pay**

/ 27

82867 5314821552426834124800000

RIVER HALL COMMUNITY
DEVELOPMENT
2300 GLADES RD STE 410W
BOCA RATON FL 33431-8556The amount enclosed includes
the following donation:**FPL Care To Share:** _____Make check payable to FPL
in U.S. funds and mail along with
this coupon to:FPL
GENERAL MAIL FACILITY
MIAMI FL 33188-0001Visit **FPL.com/PayBill**
for ways to pay.

82155-24268

ACCOUNT NUMBER

\$842.14

TOTAL AMOUNT YOU OWE

Dec 9, 2025

NEW CHARGES DUE BY

\$

AMOUNT ENCLOSED



Customer Name: Account Number:
RIVER HALL COMMUNITY 82155-24268
DEVELOPMENT

FPL.com Page 2

E001

BILL DETAILS

Amount of your last bill	900.46
Payment received - Thank you	-900.46
Balance before new charges	\$0.00

New Charges

Rate: GSD-1 GENERAL SERVICE DEMAND /per Contract	
Base charge:	\$30.41
Non-fuel: (\$0.033890 per kWh)	\$231.81
Fuel: (\$0.027180 per kWh)	\$185.91
Demand: (\$13.41 per KW)	\$335.25

Electric service amount	783.38
-------------------------	--------

Gross receipts tax (State tax)	20.10
Franchise fee (Reqd local fee)	37.95

Taxes and charges	58.05
-------------------	-------

Regulatory fee (State fee)	0.71
----------------------------	------

Total new charges	\$842.14
-------------------	----------

Total amount you owe	\$842.14
----------------------	----------

METER SUMMARY

Meter reading - Meter KCJ5863. Next meter reading Dec 17, 2025.

Usage Type	Current	-	Previous	=	Usage
kWh used	30737		23897		6840
	19.01				
Actual demand					19
Contract demand					25

ENERGY USAGE COMPARISON

	This Month	Last Month	Last Year
Service to	Nov 18, 2025	Oct 21, 2025	Nov 19, 2024
kWh Used	6840	7728	6672
Service days	28	32	29
kWh/day	244	241	230
Amount	\$842.14	\$900.46	\$796.92

KEEP IN MIND

- Taxes, fees, and charges on your bill are determined and required by your local and state government to be used at their discretion.
- The fuel charge represents the cost of fuel used to generate electricity. It is a direct pass-through to customers. FPL does not profit from fuel, although higher costs do result in higher state and local taxes and fees.

Download the app

Get instant, secure access to outage and billing info from your mobile device.

[Download now](#)

Bigger LED rebates

Don't miss out on our increased rebates up to \$40 per qualifying LED fixture when you make the switch.

[Claim rebates](#)

When you pay by check, you authorize FPL to process your payment electronically or as a draft. If your payment is processed electronically, your checking account may be debited on the same day we receive the check and your check will not be returned with your checking account statement. FPL does not agree to any restrictions, conditions or endorsements placed on any bill statement or payments such as check, money order or other forms of payment. We will process the payment as if these restrictions or conditions do not exist.

Coleman, Yovanovich & Koester, P.A.
Northern Trust Bank Building
4001 Tamiami Trail North, Suite 300
Naples, Florida 34103-3556
Telephone: (239) 435-3535
Fax: (239) 435-1218

River Hall CDD
Wrathell, Hunt & Associates, LLC
2300 Glades Road, Suite 410W
Boca Raton FL 33431

Page: 1
November 20, 2025
File No: 16581-001M
Statement No: 66

Attn: Debbie Tudor

Gen Rep

514.100

001

Previous Balance

\$3,511.17

Fees

Hours

10/02/2025	GLU	Review agenda for Board of Supervisors meeting; Participation in Board of Supervisors meeting	0.90	355.50
10/13/2025	GLU	Review and respond to email correspondence from Paul Asfour on CDD Supervisor position in relation to HOA questions; Update research on same.	0.50	197.50
		Professional Fees through 11/20/2025	1.40	553.00

Recapitulation

<u>Timekeeper</u>	<u>Hours</u>	<u>Rate</u>	<u>Total</u>
Gregory L. Urbancic	1.40	\$395.00	\$553.00

Total Current Work

553.00

Payments

11/04/2025	Fee payment received ck # 3698 River Hall CDD	-1,362.00
------------	---	-----------

Balance Due (includes previous balance, if any)

\$2,702.17



16900 Gator Road
Fort Myers, FL 33912

Invoice

Date	Invoice #
11/17/2025	14086

Phone # (239) 591-5903 accounting@collierpave.com
Fax # (239) 280-0762 www.collierpave.com

Bill To
River Hall CDD C/O Wrathell, Hunt & Associates LLC 9220 Bonita Beach Rd, Suite 214 Bonita Springs, FL 34135

Project
71638*25-562 River Hall CDD - River Hall

P.O. No.	Terms	Due Date
	Net 30	12/17/2025

Description	Quantity	U/M	Unit	Rate	Amount
Change Order #1 Asphalt Patch	1		LS	1,500.00	1,500.00
GF ROAD AND STREET FACILITIES ROADWAY REPAIR & MAINT					
541.462					
001					

Thank you for your Business!	Total	\$1,500.00
	Payments/Credits	\$0.00
	Balance Due	\$1,500.00

INVOICE

FL GIS Solutions, LLC
21696 Windham Run
Estero, FL 33928 3256

Felipe@flgis.com
+1 (239) 565 3066
www.flgis.com



Bill to

Chuck Adams
River Hall Community Development District
9220 Bonita Beach Rd
Suite 214
Bonita Springs, FL 34135

Ship to

Chuck Adams
River Hall Community Development District
9220 Bonita Beach Rd
Suite 214
Bonita Springs, FL 34135

Invoice details

Invoice no.: 1711
Terms: Net 15
Invoice date: 12/01/2025
Due date: 12/16/2025

519.320

001

Service Date	Product/service	Description	Qty	Rate	Amount
11/10/2025	GIS Services	Drainage updates and Lakes	5.5	\$120.00	\$660.00
11/11/2025	GIS Services	GIS updates to Web Application	3.5	\$120.00	\$420.00

Total \$1,080.00

Ways to pay

BANK

Please pay ACH or send check to the address below. Thank you!

FL GIS Solutions, LLC
21696 Windham Run
Estero, FL 33928

ENGINEERING

View and pay


Description	Quantity	Price	UOM	Original Bill	Adjusted	Paid	Amount Due
Marked or Unmarked Patrol Vehicle - Flat Rate per Detail	1.00	\$15.00	EACH	\$15.00	\$0.00	\$0.00	\$15.00
Marked or Unmarked Patrol Vehicle - Flat Rate per Detail	1.00	\$15.00	EACH	\$15.00	\$0.00	\$0.00	\$15.00
Marked or Unmarked Patrol Vehicle - Flat Rate per Detail	1.00	\$15.00	EACH	\$15.00	\$0.00	\$0.00	\$15.00
Marked or Unmarked Patrol Vehicle - Flat Rate per Detail	1.00	\$15.00	EACH	\$15.00	\$0.00	\$0.00	\$15.00
Traffic w/vehicle - Julian Chala from 11/10/2025 12:00:00 to 11/10/2025 16:00:00	4.00	\$73.00	EACH	\$292.00	\$0.00	\$0.00	\$292.00
Traffic w/vehicle - Leonard Gould from 11/13/2025 07:00:00 to 11/13/2025 11:00:00	4.00	\$73.00	EACH	\$292.00	\$0.00	\$0.00	\$292.00
Traffic w/vehicle - Jonathon Miller from 11/18/2025 12:00:00 to 11/18/2025 16:00:00	4.00	\$73.00	EACH	\$292.00	\$0.00	\$0.00	\$292.00
Traffic w/vehicle - Julian Chala from 11/19/2025 07:00:00 to 11/19/2025 11:00:00	4.00	\$73.00	EACH	\$292.00	\$0.00	\$0.00	\$292.00

OFF-DUTY DETAIL
<div>541.466</div> <div>001</div> <div>GF ROAD AND STREET FACILITIES OFF-DUTY SHERIFF PATROL</div>

The Lee County Sheriff's Office is requesting all customers provide an email address where future invoices and statements will be sent. Please send an email to AR@sheriffleefl.org include your customer number and email address. Thank you!

This account is due and payable to: Office of the Sheriff, Lee County upon receipt.	Invoice Total:	\$1,228.00
---	----------------	------------

PLEASE RETURN BOTTOM PORTION WITH PAYMENT



Mail your remittance to:

Office of the Sheriff, Lee County

14750 Six Mile Cypress Parkway
Fort Myers, FL 33912
(239) 477-1351
AR@Sheriffleefl.org
TIN 59-6000705

Invoice Date	Invoice No.
11/24/2025	37483
Customer Number	
8991	
Invoice Total Due	
\$1,228.00	
Amount Paid	

8991
RIVERHALL COMMUNITY DEVELOPMENT DIST
ATTN: SHANE WILLIS 9220 BONITA BEACH RD SUITE 214
BONITA SPRINGS, FL 34135

Due Upon Receipt

Swine Solutions

12013 Rose Ln
Riverview, FL 33569 US
Thomas@swinesolutionsfl.com
<https://www.SwineSolutionsFL.com>



INVOICE

BILL TO
River Hall CDD
9220 Bonita Beach Road
Suite 214
Bonita Springs
FL
34135

INVOICE 653
DATE 09/24/2025
TERMS Net 30
DUE DATE 10/24/2025

DATE	SERVICE	DESCRIPTION	QTY	RATE	AMOUNT
	Monthly Trapping Service	Monthly Trapping Service		1,900.00	1,900.00

BALANCE DUE

\$1,900.00

538.465

001

Swine Solutions

12013 Rose Ln
Riverview, FL 33569 US
Thomas@swinesolutionsfl.com
https://www.SwineSolutionsFL.com

INVOICE

BILL TO
River Hall CDD
9220 Bonita Beach Road
Suite 214
Bonita Springs
FL
34135

INVOICE 671
DATE 11/24/2025
TERMS Net 30
DUE DATE 12/24/2025

DATE	SERVICE	DESCRIPTION	QTY	RATE	AMOUNT
	Monthly Trapping Service	Monthly Trapping Service		1,900.00	1,900.00

BALANCE DUE \$1,900.00

538.465

001

Pay invoice

GF
STORMWATER CONTROL
HOG REMOVAL

River Hall Meeting Attendance 12.11.25

ID 4330895223, created by Cleo Adams on Dec 12 at 08:32

Location

Board Pay

Status

Active

Assignees

Stephanie Schackmann

Dates

Dec 12 (1d)

Description

The following were present:

Asfour
Cunningham
Mitchell
Block

511.110

001

Cleo Adams Dec 12 08:32

Scheduled task for Dec 12 (1d)

Assigned task to Cleo Adams

Included task into Board Pay

Katherine Bradshaw Dec 15 09:09

Reassigned task from Cleo Adams to Stephanie Schackmann



PLEASE
REMIT
PAYMENT
VIA:

Mail:
ACH:
WIRE:

Fed ID:
Pay Online:



River Hall CDD
c/o Wrathell, Hunt & Associates/ Stephanie
Schackm
2300 Glades Road
Suite 410W
Boca Raton, FL 33431

November 30, 2025
Project No: 340039-01-001
Invoice No: 533517

Project 340039-01-001 2015012 | |River Hall CDD
Email: RiverHallcdd@districtap.com

Task 00004 2015012|Z| |River Hall CDD-General Services

Hourly

		Hours	Rate	Amount	
Principal in Charge Engineer					
Krebs, Charles	11/6/2025	2.75	238.00	654.50	
attend board meeting- 2.50respond to emails from paul and email to grady on lake certifications 0.25					
Krebs, Charles	11/13/2025	.50	238.00	119.00	
requesat to remove cypress trees, review files for landscape plans, repond to cleo and shane					
Krebs, Charles	11/17/2025	1.00	238.00	238.00	
site visit to review road repair					
Krebs, Charles	11/25/2025	.25	238.00	59.50	
send inlet missing top addresss to yeisen to investigate					
Totals		4.50		1,071.00	
				1,071.00	
Task Sub Total				\$1,071.00	
CURRENT INVOICE TOTAL.....				\$1,071.00	

Project Manager: Charles Krebs

Coleman, Yovanovich & Koester, P.A.
Northern Trust Bank Building
4001 Tamiami Trail North, Suite 300
Naples, Florida 34103-3556
Telephone: (239) 435-3535
Fax: (239) 435-1218

River Hall CDD
Wrathell, Hunt & Associates, LLC
2300 Glades Road, Suite 410W
Boca Raton FL 33431

Page: 1
December 08, 2025
File No: 16581-001M
Statement No: 67

Attn: Debbie Tudor

Gen Rep

Previous Balance \$2,702.17

Fees

Hours

11/06/2025	GLU	Review agenda for Board of Supervisors meeting; Participation in Board of Supervisors meeting	1.25	493.75
11/10/2025	GLU	Review email correspondence from Shane Willis on signage issue	0.20	79.00
11/11/2025	GLU	Review and respond to email correspondence from Shane Willis on Lykins contract	0.20	79.00
		Professional Fees through 12/08/2025	1.65	651.75

Recapitulation

<u>Timekeeper</u>	<u>Hours</u>	<u>Rate</u>	<u>Total</u>
Gregory L. Urbancic	1.65	\$395.00	\$651.75

Total Current Work 651.75

Payments

514.100

11/26/2025	Fee payment received ck # 3715 River Hall CDD	001	-2,149.17
------------	---	-----	-----------

Balance Due (includes previous balance, if any) \$1,204.75

Gulfscapes Landscape
Management Services
PO Box 366757
Bonita Springs, FL 34135 US
2399137179

Invoice 348624



BILL TO
River Hall CDD
c/o Wrathell, Hart, Hunt &
Associates, LLC
9220 Bonita Beach Rd., #214
Bonita Springs, FL 34135

SHIP TO
River Hall CDD

DATE
11/26/2025

PLEASE PAY
\$25,230.00

DUE DATE
12/26/2025

DESCRIPTION	AMOUNT
Monthly Maintenance for November 2025	15,330.00
Palm Trimming	9,900.00
	SUBTOTAL 25,230.00
	TAX 0.00
	TOTAL 25,230.00
539.464	
001	
	TOTAL DUE \$25,230.00

THANK YOU.

GF
OTHER PHYSICAL ENVIRONMENT
LANDSCAPE MAINTENANCE


Description	Quantity	Price	UOM	Original Bill	Adjusted	Paid	Amount Due
Marked or Unmarked Patrol Vehicle - Flat Rate per Detail	1.00	\$15.00	EACH	\$15.00	\$0.00	\$0.00	\$15.00
Marked or Unmarked Patrol Vehicle - Flat Rate per Detail	1.00	\$15.00	EACH	\$15.00	\$0.00	\$0.00	\$15.00
Traffic w/vehicle - Julian Chala from 12/3/2025 07:00:00 to 12/3/2025 11:00:00	4.00	\$73.00	EACH	\$292.00	\$0.00	\$0.00	\$292.00
Traffic w/vehicle - Jonathon Miller from 12/5/2025 12:00:00 to 12/5/2025 16:00:00	4.00	\$73.00	EACH	\$292.00	\$0.00	\$0.00	\$292.00

OFF-DUTY DETAIL
<div>GF ROAD AND STREET FACILITIES OFF-DUTY SHERIFF PATROL 541.466 001</div>

The Lee County Sheriff's Office is requesting all customers provide an email address where future invoices and statements will be sent. Please send an email to AR@sheriffleefl.org include your customer number and email address. Thank you!

This account is due and payable to: Office of the Sheriff, Lee County upon receipt.	Invoice Total:	\$614.00
---	----------------	----------

PLEASE RETURN BOTTOM PORTION WITH PAYMENT



Mail your remittance to:

Office of the Sheriff, Lee County

14750 Six Mile Cypress Parkway
Fort Myers, FL 33912
(239) 477-1351
AR@Sheriffleefl.org
TIN 59-6000705

Invoice Date	Invoice No.
12/08/2025	37611
Customer Number	
8991	
Invoice Total Due	
\$614.00	
Amount Paid	

8991
RIVERHALL COMMUNITY DEVELOPMENT DIST
ATTN: SHANE WILLIS 9220 BONITA BEACH RD SUITE 214
BONITA SPRINGS, FL 34135

Due Upon Receipt

P & T Lawn & Tractor Service, Inc.

Invoice

15980 Old Olga Road
Alva, FL 33920

Date	Invoice #
12/9/2025	25-1470

Bill To
River Hall CDD 9220 Bonita Beach Road Suite #214 Bonita Springs, FL 34135

Ship To
Riverhall CDD Bush Hogging Project 3089 River Hall Parkway Alva, FL 33920

P.O. No.	Terms	Project

Item	Description	Qty	Rate	Amount
Service	Labor to bush hog the FPL Easement on the West Side of River Hall Pkwy in Alva, Florida (9 acres)	1	1,950.00	1,950.00
Service	Labor to bush hog the East Side of River Hall Pkwy in Alva, Florida (35.3 acres)	1	3,875.00	3,875.00
Service	Completed on November 28, 2025		0.00	0.00
GF OTHER PHYSICAL ENVIRONMENT LANDSCAPE MAINTENANCE 539.464 001				
Total				\$5,825.00
Payments/Credits				\$0.00
Balance Due				\$5,825.00

Phone #
239-694-4848



Corporate Trust Services
EP-MN-WN3L
60 Livingston Ave.
St. Paul, MN 55107

Invoice Number:
Account Number:
Invoice Date:
Direct Inquiries To:
Phone:



River Hall Community Development District
Attn RIVER HALL COMMUNITY DEV DIST
2300 GLADES RD
STE 410W
BOCA RATON, FL 33431

United States
River Hall Community Development District Capital Improvement Revenue Bonds, Series 2023A
Assessment Area 4)

The following is a statement of transactions pertaining to your account. For further information, please review the attached.

STATEMENT SUMMARY

PLEASE REMIT BOTTOM COUPON PORTION OF THIS PAGE WITH CHECK PAYMENT OF INVOICE.

TOTAL AMOUNT DUE

\$4,246.25

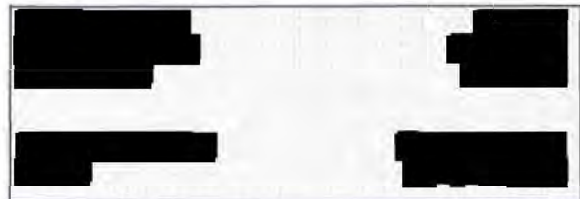
All invoices are due upon receipt.

513313

001

Please detach at perforation and return bottom portion of the statement with your check, payable to U.S. Bank.

River Hall Community Development District Capital
Improvement Revenue Bonds, Series 2023A
Assessment Area 4)



Wire Instructions:



Please mail payments to:

U.S. Bank
CM-9690
PO BOX 70870
St. Paul, MN 55170-9690





Corporate Trust Services
EP-MN-WN3L
60 Livingston Ave.
St. Paul, MN 55107

Invoice Number:
Invoice Date:
Account Number:
Direct Inquiries To:
Phone:



River Hall Community Development District Capital
Improvement Revenue Bonds, Series 2023A
Assessment Area 4)



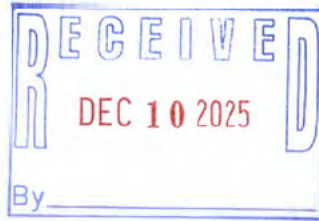
CURRENT CHARGES SUMMARIZED FOR ENTIRE RELATIONSHIP

<u>Detail of Current Charges</u>	<u>Volume</u>	<u>Rate</u>	<u>Portion of Year</u>	<u>Total Fees</u>
04130 Paying Agent / Transfer Agent	1.00	3,950.00	100.00%	\$3,950.00
Subtotal Administration Fees - In Advance 11/01/2025 - 10/31/2026				\$3,950.00
Incidental Expenses 11/01/2025 to 10/31/2026	3,950.00	0.075		\$296.25
Subtotal Incidental Expenses				\$296.25
TOTAL AMOUNT DUE				\$4,246.25





MK-WI-S300 GCFS
1555 N. Rivercenter Drive, Suite 300
Milwaukee, WI 53212



7977629



000001776 02 SP 106481627130271 P

River Hall Community Development Distric
Attn RIVER HALL COMMUNITY DEV DIST
2300 GLADES RD
STE 410W
BOCA RATON, FL 33431





Corporate Trust Services
EP-MN-WN3L
60 Livingston Ave.
St. Paul, MN 55107

Invoice Number:
Account Number:
Invoice Date:
Direct Inquiries To:
Phone:



River Hall Community Dev District
2300 Glades Rd Ste 410W
Boca Raton, FL 33431-8556
United States

River Hall Community Development District Capital Improvement Revenue Bonds Series 2024
(Assessment Area 5)

The following is a statement of transactions pertaining to your account. For further information, please review the attached.

STATEMENT SUMMARY

PLEASE REMIT BOTTOM COUPON PORTION OF THIS PAGE WITH CHECK PAYMENT OF INVOICE.

TOTAL AMOUNT DUE \$4,246.25

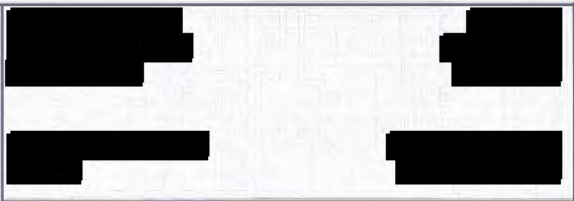
All invoices are due upon receipt.

513.313

001

Please detach at perforation and return bottom portion of the statement with your check, payable to U.S. Bank.

River Hall Community Development District Capital
Improvement Revenue Bonds Series 2024
(Assessment Area 5)



Wire Instructions:



Please mail payments to:
U.S. Bank
CM-9690
PO BOX 70870
St. Paul, MN 55170-9690





Corporate Trust Services
EP-MN-WN3L
60 Livingston Ave.
St. Paul, MN 55107

Invoice Number:
Invoice Date:
Account Number:
Direct Inquiries To:
Phone:

[REDACTED]
[REDACTED]
[REDACTED]
[REDACTED]
[REDACTED]

River Hall Community Development District Capital
Improvement Revenue Bonds Series 2024
(Assessment Area 5)

[REDACTED] [REDACTED] [REDACTED] [REDACTED] [REDACTED] [REDACTED] [REDACTED]
[REDACTED] [REDACTED] [REDACTED] [REDACTED] [REDACTED] [REDACTED] [REDACTED]

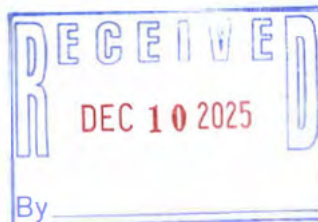
CURRENT CHARGES SUMMARIZED FOR ENTIRE RELATIONSHIP

Detail of Current Charges	Volume	Rate	Portion of Year	Total Fees
04111 Paying Agent / Regist / Trustee Agent	1.00	3,950.00	100.00%	\$3,950.00
Subtotal Administration Fees - In Advance 11/01/2025 - 10/31/2026				\$3,950.00
Incidental Expenses 11/01/2025 to 10/31/2026	3,950.00	0.075		\$296.25
Subtotal Incidental Expenses				\$296.25
TOTAL AMOUNT DUE				\$4,246.25





MK-WI-S300 GCFS
1555 N. Rivercenter Drive, Suite 300
Milwaukee, WI 53212



7979751



000002835 02 SP 106481627131330 P

River Hall Community Dev District
2300 Glades Rd Ste 410W
Boca Raton, FL 33431-8556
United States



Wrathell, Hunt & Associates, LLC

2300 Glades Rd.
Suite 410W
Boca Raton, FL 33431

Invoice

Date	Invoice #
12/1/2025	2026-0434

Bill To:
River Hall CDD PO Box 810036 Boca Raton, FL 334811

Description	Amount
Management	3,750.00
Assessment Methodology	375.00
512.311 - 3,750.00	
513.310 - 375.00	
001	
Building client relationships one step at a time ...	Total \$4,125.00

RIVER HALL
COMMUNITY DEVELOPMENT DISTRICT

MINUTES

DRAFT
MINUTES OF MEETING
RIVER HALL
COMMUNITY DEVELOPMENT DISTRICT

The Board of Supervisors of the River Hall Community Development District held a Regular Meeting on January 8, 2026 at 3:30 p.m., at the River Hall Town Hall Center, located at 3089 River Hall Parkway, Alva, Florida 33920.

Present:

Ken Mitchell	Chair
Paul D. Asfour	Vice Chair
Daniel J. Block	Assistant Secretary
Bob Cunningham	Assistant Secretary

Also present:

Chuck Adams	District Manager
Cleo Adams	District Manager
Shane Willis (via telephone)	Operations Manager
Greg Urbancic (via telephone)	District Counsel
Charlie Krebs	District Engineer

Residents present:

Pamela Becker	Robert Stark	Mark Gissiner	Patrick F. Infante
Robert H. Lorenzen	Anthony Wilson		

FIRST ORDER OF BUSINESS

Call to Order/Roll Call

Mr. Adams called the meeting to order at 3:30 p.m. Supervisors Mitchell, Asfour, Block and Cunningham were present. One seat was vacant.

SECOND ORDER OF BUSINESS

Public Comments – Non-Agenda Items (3 minutes per speaker)

Resident Robert Stark thanked the Board and Staff for making his seven years serving on the CDD Board a wonderful experience. He looks forward to another person joining the Board and wished the candidates the best.

Mr. Asfour and the Board thanked Mr. Stark for his service.

Resident Pamela Becker thanked the Board for addressing issues she raised at the last meeting and voiced her opinion that the pine straw on River Hall Parkway is much more attractive

than mulch. She suggested removal rather than replacement of entrance fencing discussed at the last meeting. Mrs. Adams stated that bids were requested and will be discussed during the Operations Report; the Board directed replacement, and a change to the aesthetics would require approval of the Design Review Committee (DRC).

Mr. Asfour and Mr. Adams stated that Ms. Becker's concerns regarding removal of the ladder sign by the entrance are not a CDD matter. The consensus was that GreenPointe Marketing is responsible for maintaining that sign. It was noted that the ladder sign was removed.

THIRD ORDER OF BUSINESS

Consideration of Appointment of Qualified Elector to Fill Unexpired Term of Seat 4; Term Expires November 2026

A. Candidate(s)

- I. Mark Gissiner
- II. Patrick F. Infante
- III. Robert H. Lorenzen
- IV. Anthony Wilson

Mr. Mitchell introduced and welcomed the four candidates. It was noted that a submission was received from Steven Fox after the deadline and will not be considered. Mr. Mitchell expressed support for adding a Board Member from Hampton Lakes or The Cascades.

The candidates discussed their qualifications and interest in serving on the CDD Board and responded to questions. The Board Members shared their impressions and noted that all four candidates are well qualified.

Mr. Block nominated Patrick Infante to fill Seat 4. No other nominations were made.

On MOTION by Mr. Block and seconded by Mr. Asfour, with Mr. Block, Mr. Mitchell and Mr. Cunningham in favor and Mr. Asfour dissenting, the appointment of Patrick F. Infante to Seat 4, was approved. [Motion passed 3-1]

B. Administration of Oath of Office (the following will be provided in a separate package)

Mr. Adams, a Notary of the State of Florida and duly authorized, administered the Oath of Office to Patrick Infante. He will review the following with Mr. Infante following the meeting:

- I. Required Ethics Training and Disclosure Filing
 - Sample Form 1 2023/Instructions
- II. Membership, Obligations and Responsibilities

III. Guide to Sunshine Amendment and Code of Ethics for Public Officers and Employees

IV. Form 8B: Memorandum of Voting Conflict for County, Municipal and other Local Public Officers

FOURTH ORDER OF BUSINESS

Consideration of Resolution 2026-02, Electing and Removing Officers of the District and Providing for an Effective Date

Mr. Adams presented Resolution 2026-02. Mr. Block nominated the following:

Ken Mitchell	Chair
Paul D. Asfour	Vice Chair
Bob Cunningham	Assistant Secretary
Daniel J. Block	Assistant Secretary
Patrick F. Infante	Assistant Secretary

No other nominations were made. This Resolution removes the following from the Board:

Robert Stark	Vice Chair
--------------	------------

The following prior appointments by the Board remain unaffected by this Resolution:

Chuck Adams	Secretary
Craig Wrathell	Assistant Secretary
Craig Wrathell	Treasurer
Jeff Pinder	Assistant Treasurer

On MOTION by Mr. Cunningham and seconded by Mr. Asfour, with all in favor, Resolution 2026-02, Electing, as nominated, and Removing Officers of the District and Providing for an Effective Date, was adopted.

FIFTH ORDER OF BUSINESS

Update: Superior Waterway Services, Inc. Treatment Report – Andy Nott

In Mr. Nott's absence, the Monthly Report was included for informational purposes. Mrs. Adams will convey any concerns to Mr. Nott.

Mr. Asfour stated that he sent Mrs. Adams photos of erosion at Lake 4-1B that a resident believes could be caused by a neighbor.

Mrs. Adams stated that Superior will trim the three cypress trees behind the resident's home next week, at a cost of about \$250. The 20' tall trees can only be trimmed by one third.

SIXTH ORDER OF BUSINESS**Update: School Zone Signage**

Mr. Krebs recalled many emails to the manufacturer's contact in early December about the school zone signage turning off or losing connection. The manufacturer was copied on the emails. A new modem will be sent for sign #404, which is the most troublesome. He will continue addressing ongoing connection and software issues with the representative and the manufacturer.

Mr. Mitchell asked about having the manufacturer reimbursing the CDD for the expense to get the system operating properly. Mr. Krebs stated he will calculate the hours and speak with Jabari, as equipment might need to be replaced as part of the warranty replacement.

It was noted that the signs were operational today and Sheriffs were present this morning. Mr. Krebs stated he keeps very accurate track of his time allocated to the project.

SEVENTH ORDER OF BUSINESS**Continued Discussion: Bowman Consulting Group LTD River Hall Lake Investigation Memo**

The Bowman Consulting Group Memo regarding the River Hall Lake Investigation was included for informational purposes.

Mr. Krebs presented the report and noted the following:

- Many isolated erosion locations are noted. The photographs reveal many exposed areas that normally remain under water and do not require repair.
- True areas of erosion include areas measuring 9" or greater, and areas of isolated, concentrated flow that is eroding.
- When erosion related to resident downspouts or broken irrigation lines is verified, District Management will be given information including the GPS location.

Discussion ensued regarding the report, examples of erosion issues, causes of erosion and areas on lake banks maintained by homeowners.

Staff will work together on this and letters will be sent to homeowners when appropriate.

EIGHTH ORDER OF BUSINESS**Discussion/Consideration/Ratification: Performance Measures/Standards & Annual Reporting Form**

A. October 1, 2024 - September 30, 2025 [Posted]

On MOTION by Mr. Asfour and seconded by Mr. Block, with all in favor, the 2025 Goals and Objectives Reporting, was ratified.

B. October 1, 2025 - September 30, 2026

On MOTION by Mr. Asfour and seconded by Mr. Cunningham, with all in favor, the Goals and Objectives Reporting Fiscal Year 2026 Performance Measures and Standards, were approved.

NINTH ORDER OF BUSINESS

**Acceptance of Unaudited Financial
Statements as of November 30, 2025**

On MOTION by Mr. Asfour seconded by Mr. Cunningham, with all in favor, the Unaudited Financial Statements as of November 30, 2025, were accepted.

TENTH ORDER OF BUSINESS

**Approval of December 11, 2025 Regular
Meeting Minutes**

The following change was made:

Line 74: Change "lilies" to "levels"

On MOTION by Mr. Block and seconded by Mr. Asfour, with all in favor, the December 11, 2025 Regular Meeting Minutes, as amended, were approved.

ELEVENTH ORDER OF BUSINESS

Staff Reports

A. District Engineer: Hole Montes

Mr. Krebs stated that, in addition to compiling a list of repairs for the lakes, he is working on nutrient reduction according to the statewide policy.

B. District Counsel: Coleman, Yovanovich & Koester

Mr. Urbancic stated that a new Legislative Session is underway. The Board will be kept apprised of any bills that might impact the CDD.

C. District Manager: Wrathell, Hunt and Associates, LLC

- **NEXT MEETING DATE: February 5, 2026 at 3:30 PM**

- **QUORUM CHECK**

All Supervisors confirmed their attendance at the February 5, 2026 meeting.

D. Operations Manager: Wrathell, Hunt and Associates, LLC

The January Field Operations Status Report was included for informational purposes.

Mr. Mitchell asked who paid for the Chestnut Grove Drive lake bank repairs. Mr. Willis stated the CDD paid for the lake bank repairs, and the homeowner paid for the downspout repairs, which he believes were the homeowner's previous contractor's work. District Management's consensus was that, if the original contractor's work failed, the homeowner could have used her warranty with them.

TWELFTH ORDER OF BUSINESS

Public Comments: Non-Agenda Items (3 minutes per speaker)

Mr. Wilson asked which Seats will be up for election in November 2026. It was noted that Seats 4 and 5 will be up for election.

Mr. Wilson congratulated Mr. Infante and thanked the Board for their consideration.

THIRTEENTH ORDER OF BUSINESS

Supervisors' Comments/Requests

Mr. Asfour recalled a series of email explanations previously provided and asked Mr. Krebs to explain how the water is replenished from the wells for irrigation, as lake levels are dropping and residents ask why they are dropping, despite wells that replenish for irrigation.

Mr. Krebs stated that South Florida is gathering the pumping data for the last twelve months; he will share it with the Board as soon as it is received.

Regarding Mr. Asfour's question, Mr. Krebs suggested thinking of the lakes and where the groundwater is. In the dry season, groundwater continues to drop, and the level will be pretty consistent with where lake levels are now. Adding more water into the lake will not replenish the level of the lake because the groundwater is not rising with it. The irrigation permits are set up so that, for every gallon taken from the lakes to irrigate the homes or the golf course, water can be taken from the deep aquifers, not the groundwater aquifers, and put back in, so that the drop in the groundwater level does not increase; that will not raise the level of the lakes.

Mr. Adams stated it is a one-for-one replacement. If one gallon is taken out, one gallon can be put back in; the level of the lake cannot be artificially raised because all that water would bleed into the groundwater table.

Mr. Krebs stated it is not intended to artificially raise those levels; it is basically intended so that irrigation activities do not dewater the groundwater aquifers. As water is pulled out and

distributed, it can be drawn from the deep aquifers and put back into the lake at a 1:1 level and that way the groundwater basically stays the same.

Mr. Adams stated that, otherwise, a depression is created in the pond being withdrawn from and the water from the surrounding groundwater comes to that void, which lowers the ponds even more.

Mr. Mitchell recalled Mr. Stark advising that several pumps are not working. He asked if that is the CDD's responsibility. Mr. Krebs stated that the permit is in the HOA's name. Mr. Adams noted that the pumps being referred to belong to the community, not the CDD.

Discussion ensued regarding other factors that affect lake levels, including evaporation, use of groundwater wells, the ongoing water drought, water restrictions, limiting watering to twice per week, and water usage.

Mr. Adams stated the rainy season ended with a 15" to 17" deficit.

Mr. Asfour noted that, in this example, the number of homes does not matter. Mr. Krebs agreed and stated the calculation is based on the estimated green area to be irrigated, based on the projected density, product type, and how much of that is going to be irrigated lawn and how much will be golf course. Wetlands and areas that will not be irrigated are excluded, to determine an irrigatable acreage. The depth necessary to have a healthy lawn is then calculated, and that goes into figuring out the monthly allocation for irrigation use. While the more homes there are, the more water is used, the calculation does not consider the number of homes; rather, it is the amount of green area. The master distribution takes the acreage requiring water into account; residents utilizing more water than allowed is an HOA and irrigation rules matter.

With regard to questions and complaints about the pump stations, Mr. Krebs stated he will follow up again.

Discussion ensued regarding whether the 22 lots transferred from Ashton Oaks to The Cascades are buildable. It was noted that lots and rights to build were transferred, lot sizes were increased, and any remaining units can still be built.

Mr. Infante thanked the Board for their votes of confidence in his appointment.

FOURTEENTH ORDER OF BUSINESS

Adjournment

**On MOTION by Mr. Cunningham and seconded by Mr. Block, with all in favor,
the meeting adjourned at 4:34 p.m.**

252
253
254
255
256

Secretary/Assistant Secretary

Chair/Vice Chair

RIVER HALL
COMMUNITY DEVELOPMENT DISTRICT

STAFF
REPORTS

RIVER HALL
COMMUNITY DEVELOPMENT DISTRICT

STAFF
REPORTS
A

Description	Entity Type	Entity Name	Facility ID	Type	Calibration Date	Reporting Date	Value	Unit	SpecValue	Comments	Submittal #
Water Use Report (Monthly withdrawal for WELL 1 (SS2-1))	Well	1 (SS2-1)	193384	Pumpage Data		30-Sep-2025	0.000	MG/MONTH			WUSUB-15147
Water Use Report (Monthly withdrawal for WELL 1 (SS2-1))	Well	1 (SS2-1)	193384	Pumpage Data		31-Aug-2025	0.000	MG/MONTH			WUSUB-15147
Water Use Report (Monthly withdrawal for WELL 1 (SS2-1))	Well	1 (SS2-1)	193384	Pumpage Data		31-Jul-2025	0.000	MG/MONTH		lakes full wells off no recharge	WUSUB-15147
Water Use Report (Monthly withdrawal for WELL 1 (SS2-1))	Well	1 (SS2-1)	193384	Pumpage Data		30-Jun-2025	4.150	MG/MONTH			WUSUB-11068
Water Use Report (Monthly withdrawal for WELL 1 (SS2-1))	Well	1 (SS2-1)	193384	Pumpage Data		31-May-2025	5.280	MG/MONTH			WUSUB-11068
Water Use Report (Monthly withdrawal for WELL 1 (SS2-1))	Well	1 (SS2-1)	193384	Pumpage Data		30-Apr-2025	5.200	MG/MONTH			WUSUB-11068
Water Use Report (Monthly withdrawal for WELL 1 (SS2-1))	Well	1 (SS2-1)	193384	Pumpage Data		31-Mar-2025	6.730	MG/MONTH			WUSUB-7520
Water Use Report (Monthly withdrawal for WELL 1 (SS2-1))	Well	1 (SS2-1)	193384	Pumpage Data		28-Feb-2025	3.520	MG/MONTH			WUSUB-7520
Water Use Report (Monthly withdrawal for WELL 1 (SS2-1))	Well	1 (SS2-1)	193384	Pumpage Data		31-Jan-2025	3.480	MG/MONTH			WUSUB-7520
Water Use Report (Monthly withdrawal for WELL 1 (SS2-1))	Well	1 (SS2-1)	193384	Pumpage Data		31-Dec-2024	0.000	MG/MONTH			WUSUB-3674
Water Use Report (Monthly withdrawal for WELL 1 (SS2-1))	Well	1 (SS2-1)	193384	Pumpage Data		30-Nov-2024	0.000	MG/MONTH			WUSUB-3674
Water Use Report (Monthly withdrawal for WELL 1 (SS2-1))	Well	1 (SS2-1)	193384	Pumpage Data		31-Oct-2024	0.000	MG/MONTH			WUSUB-3674
Water Use Report (Monthly withdrawal for WELL 1 (SS2-1))	Well	1 (SS2-1)	193384	Pumpage Data		30-Sep-2024	0.000	MG/MONTH			WUSUB-613
Water Use Report (Monthly withdrawal for WELL 1 (SS2-1))	Well	1 (SS2-1)	193384	Pumpage Data		31-Aug-2024	0.000	MG/MONTH			WUSUB-613
Water Use Report (Monthly withdrawal for WELL 1 (SS2-1))	Well	1 (SS2-1)	193384	Pumpage Data		31-Jul-2024	0.000	MG/MONTH			WUSUB-613
Water Use Report	WELL	1 (SS2-1)	193384	Pumpage Data		30-Jun-2024	3.978	MG/MONTH			6896059
Water Use Report	WELL	1 (SS2-1)	193384	Pumpage Data		31-May-2024	3.614	MG/MONTH			6896058
Water Use Report	WELL	1 (SS2-1)	193384	Pumpage Data		30-Apr-2024	3.821	MG/MONTH			6896057
Water Use Report	WELL	1 (SS2-1)	193384	Pumpage Data		31-Mar-2024	3.762	MG/MONTH			6831498
Water Use Report	WELL	1 (SS2-1)	193384	Pumpage Data		29-Feb-2024	3.086	MG/MONTH			6831497
Water Use Report	WELL	1 (SS2-1)	193384	Pumpage Data		31-Jan-2024	4.409	MG/MONTH			6831496
Water Use Report (Monthly withdrawal for WELL 10 (SS2-10))	Well	10 (SS2-10)	193393	Pumpage Data		30-Sep-2025		MG/MONTH		p	WUSUB-15147
Water Use Report (Monthly withdrawal for WELL 10 (SS2-10))	Well	10 (SS2-10)	193393	Pumpage Data		31-Aug-2025		MG/MONTH		p	WUSUB-15147
Water Use Report (Monthly withdrawal for WELL 10 (SS2-10))	Well	10 (SS2-10)	193393	Pumpage Data		31-Jul-2025		MG/MONTH		p	WUSUB-15147
Water Use Report (Monthly withdrawal for WELL 10 (SS2-10))	Well	10 (SS2-10)	193393	Pumpage Data		30-Jun-2025		MG/MONTH		p	WUSUB-11068
Water Use Report (Monthly withdrawal for WELL 10 (SS2-10))	Well	10 (SS2-10)	193393	Pumpage Data		31-May-2025		MG/MONTH		p	WUSUB-11068
Water Use Report (Monthly withdrawal for WELL 10 (SS2-10))	Well	10 (SS2-10)	193393	Pumpage Data		30-Apr-2025		MG/MONTH		p	WUSUB-11068
Water Use Report (Monthly withdrawal for WELL 10 (SS2-10))	Well	10 (SS2-10)	193393	Pumpage Data		31-Mar-2025		MG/MONTH		p	WUSUB-7520
Water Use Report (Monthly withdrawal for WELL 10 (SS2-10))	Well	10 (SS2-10)	193393	Pumpage Data		28-Feb-2025		MG/MONTH		p	WUSUB-7520
Water Use Report (Monthly withdrawal for WELL 10 (SS2-10))	Well	10 (SS2-10)	193393	Pumpage Data		31-Jan-2025		MG/MONTH		p	WUSUB-7520

Water Use Report (Monthly withdrawal for WELL 10 (SS2-10))	Well	10 (SS2-10)	193393	Pumpage Data	31-Dec-2024	MG/MONTH	p		WUSUB-3674
Water Use Report (Monthly withdrawal for WELL 10 (SS2-10))	Well	10 (SS2-10)	193393	Pumpage Data	30-Nov-2024	MG/MONTH	p		WUSUB-3674
Water Use Report (Monthly withdrawal for WELL 10 (SS2-10))	Well	10 (SS2-10)	193393	Pumpage Data	31-Oct-2024	MG/MONTH	p		WUSUB-3674
Water Use Report (Monthly withdrawal for WELL 10 (SS2-10))	Well	10 (SS2-10)	193393	Pumpage Data	30-Sep-2024	MG/MONTH	P		WUSUB-613
Water Use Report (Monthly withdrawal for WELL 10 (SS2-10))	Well	10 (SS2-10)	193393	Pumpage Data	31-Aug-2024	MG/MONTH	P		WUSUB-613
Water Use Report (Monthly withdrawal for WELL 10 (SS2-10))	Well	10 (SS2-10)	193393	Pumpage Data	31-Jul-2024	MG/MONTH	P		WUSUB-613
Water Use Report	WELL	10 (SS2-10)	193393	Pumpage Data	30-Jun-2024	MG/MONTH	proposed	proposed	6896086
Water Use Report	WELL	10 (SS2-10)	193393	Pumpage Data	31-May-2024	MG/MONTH	proposed	proposed	6896085
Water Use Report	WELL	10 (SS2-10)	193393	Pumpage Data	30-Apr-2024	MG/MONTH	proposed	proposed	6896084
Water Use Report	WELL	10 (SS2-10)	193393	Pumpage Data	31-Mar-2024	MG/MONTH	proposed	proposed	6831525
Water Use Report	WELL	10 (SS2-10)	193393	Pumpage Data	29-Feb-2024	MG/MONTH	proposed	proposed	6831524
Water Use Report	WELL	10 (SS2-10)	193393	Pumpage Data	31-Jan-2024	MG/MONTH	proposed	proposed	6831523
Water Use Report (Monthly withdrawal for WELL 11 (LH1-1))	Well	11 (LH1-1)	193394	Pumpage Data	30-Sep-2025	0.000 MG/MONTH			WUSUB-15147
Water Use Report (Monthly withdrawal for WELL 11 (LH1-1))	Well	11 (LH1-1)	193394	Pumpage Data	31-Aug-2025	0.000 MG/MONTH			WUSUB-15147
Water Use Report (Monthly withdrawal for WELL 11 (LH1-1))	Well	11 (LH1-1)	193394	Pumpage Data	31-Jul-2025	0.000 MG/MONTH			WUSUB-15147
Water Use Report (Monthly withdrawal for WELL 11 (LH1-1))	Well	11 (LH1-1)	193394	Pumpage Data	30-Jun-2025	0.000 MG/MONTH	well shut off lake chlorides high		WUSUB-11068
Water Use Report (Monthly withdrawal for WELL 11 (LH1-1))	Well	11 (LH1-1)	193394	Pumpage Data	31-May-2025	2.470 MG/MONTH			WUSUB-11068
Water Use Report (Monthly withdrawal for WELL 11 (LH1-1))	Well	11 (LH1-1)	193394	Pumpage Data	30-Apr-2025	1.880 MG/MONTH			WUSUB-11068
Water Use Report (Monthly withdrawal for WELL 11 (LH1-1))	Well	11 (LH1-1)	193394	Pumpage Data	31-Mar-2025	4.650 MG/MONTH			WUSUB-7520
Water Use Report (Monthly withdrawal for WELL 11 (LH1-1))	Well	11 (LH1-1)	193394	Pumpage Data	28-Feb-2025	1.810 MG/MONTH			WUSUB-7520
Water Use Report (Monthly withdrawal for WELL 11 (LH1-1))	Well	11 (LH1-1)	193394	Pumpage Data	31-Jan-2025	1.630 MG/MONTH			WUSUB-7520
Water Use Report (Monthly withdrawal for WELL 11 (LH1-1))	Well	11 (LH1-1)	193394	Pumpage Data	31-Dec-2024	0.000 MG/MONTH			WUSUB-3674
Water Use Report (Monthly withdrawal for WELL 11 (LH1-1))	Well	11 (LH1-1)	193394	Pumpage Data	30-Nov-2024	0.000 MG/MONTH			WUSUB-3674
Water Use Report (Monthly withdrawal for WELL 11 (LH1-1))	Well	11 (LH1-1)	193394	Pumpage Data	31-Oct-2024	0.000 MG/MONTH			WUSUB-3674
Water Use Report (Monthly withdrawal for WELL 11 (LH1-1))	Well	11 (LH1-1)	193394	Pumpage Data	30-Sep-2024	0.000 MG/MONTH			WUSUB-613
Water Use Report (Monthly withdrawal for WELL 11 (LH1-1))	Well	11 (LH1-1)	193394	Pumpage Data	31-Aug-2024	0.000 MG/MONTH			WUSUB-613
Water Use Report (Monthly withdrawal for WELL 11 (LH1-1))	Well	11 (LH1-1)	193394	Pumpage Data	31-Jul-2024	0.000 MG/MONTH			WUSUB-613
Water Use Report	WELL	11 (LH1-1)	193394	Pumpage Data	30-Jun-2024	2.357 MG/MONTH			6896089
Water Use Report	WELL	11 (LH1-1)	193394	Pumpage Data	31-May-2024	2.028 MG/MONTH			6896088
Water Use Report	WELL	11 (LH1-1)	193394	Pumpage Data	30-Apr-2024	2.005 MG/MONTH			6896087
Water Use Report	WELL	11 (LH1-1)	193394	Pumpage Data	31-Mar-2024	2.297 MG/MONTH			6831528
Water Use Report	WELL	11 (LH1-1)	193394	Pumpage Data	29-Feb-2024	1.909 MG/MONTH			6831527
Water Use Report	WELL	11 (LH1-1)	193394	Pumpage Data	31-Jan-2024	2.673 MG/MONTH			6831526
Water Use Report (Monthly withdrawal for WELL 12 (LH1-2))	Well	12 (LH1-2)	193395	Pumpage Data	30-Sep-2025	0.000 MG/MONTH			WUSUB-15147

Water Use Report (Monthly withdrawal for WELL 12 (LH1-2))	Well	12 (LH1-2)	193395	Pumpage Data	31-Aug-2025	0.000 MG/MONTH			WUSUB-15147
Water Use Report (Monthly withdrawal for WELL 12 (LH1-2))	Well	12 (LH1-2)	193395	Pumpage Data	31-Jul-2025	0.000 MG/MONTH			WUSUB-15147
Water Use Report (Monthly withdrawal for WELL 12 (LH1-2))	Well	12 (LH1-2)	193395	Pumpage Data	30-Jun-2025	0.000 MG/MONTH			WUSUB-11068
Water Use Report (Monthly withdrawal for WELL 12 (LH1-2))	Well	12 (LH1-2)	193395	Pumpage Data	31-May-2025	0.000 MG/MONTH			WUSUB-11068
Water Use Report (Monthly withdrawal for WELL 12 (LH1-2))	Well	12 (LH1-2)	193395	Pumpage Data	30-Apr-2025	0.000 MG/MONTH			WUSUB-11068
Water Use Report (Monthly withdrawal for WELL 12 (LH1-2))	Well	12 (LH1-2)	193395	Pumpage Data	31-Mar-2025	0.000 MG/MONTH			WUSUB-7520
Water Use Report (Monthly withdrawal for WELL 12 (LH1-2))	Well	12 (LH1-2)	193395	Pumpage Data	28-Feb-2025	0.000 MG/MONTH			WUSUB-7520
Water Use Report (Monthly withdrawal for WELL 12 (LH1-2))	Well	12 (LH1-2)	193395	Pumpage Data	31-Jan-2025	0.000 MG/MONTH			WUSUB-7520
Water Use Report (Monthly withdrawal for WELL 12 (LH1-2))	Well	12 (LH1-2)	193395	Pumpage Data	31-Dec-2024	0.000 MG/MONTH			WUSUB-3674
Water Use Report (Monthly withdrawal for WELL 12 (LH1-2))	Well	12 (LH1-2)	193395	Pumpage Data	30-Nov-2024	0.000 MG/MONTH			WUSUB-3674
Water Use Report (Monthly withdrawal for WELL 12 (LH1-2))	Well	12 (LH1-2)	193395	Pumpage Data	31-Oct-2024	0.000 MG/MONTH			WUSUB-3674
Water Use Report (Monthly withdrawal for WELL 12 (LH1-2))	Well	12 (LH1-2)	193395	Pumpage Data	30-Sep-2024	0.000 MG/MONTH			WUSUB-613
Water Use Report (Monthly withdrawal for WELL 12 (LH1-2))	Well	12 (LH1-2)	193395	Pumpage Data	31-Aug-2024	0.000 MG/MONTH			WUSUB-613
Water Use Report (Monthly withdrawal for WELL 12 (LH1-2))	Well	12 (LH1-2)	193395	Pumpage Data	31-Jul-2024	0.000 MG/MONTH			WUSUB-613
Water Use Report	WELL	12 (LH1-2)	193395	Pumpage Data	30-Jun-2024	MG/MONTH	proposed	proposed	6896092
Water Use Report	WELL	12 (LH1-2)	193395	Pumpage Data	31-May-2024	MG/MONTH	proposed	proposed	6896091
Water Use Report	WELL	12 (LH1-2)	193395	Pumpage Data	30-Apr-2024	MG/MONTH	proposed	proposed	6896090
Water Use Report	WELL	12 (LH1-2)	193395	Pumpage Data	31-Mar-2024	0.000 MG/MONTH			6831531
Water Use Report	WELL	12 (LH1-2)	193395	Pumpage Data	29-Feb-2024	0.000 MG/MONTH			6831530
Water Use Report	WELL	12 (LH1-2)	193395	Pumpage Data	31-Jan-2024	0.000 MG/MONTH			6831529
Water Use Report (Monthly withdrawal for WELL 13 (LH2-1))	Well	13 (LH2-1)	193396	Pumpage Data	30-Sep-2025	0.000 MG/MONTH			WUSUB-15147
Water Use Report (Monthly withdrawal for WELL 13 (LH2-1))	Well	13 (LH2-1)	193396	Pumpage Data	31-Aug-2025	0.000 MG/MONTH			WUSUB-15147
Water Use Report (Monthly withdrawal for WELL 13 (LH2-1))	Well	13 (LH2-1)	193396	Pumpage Data	31-Jul-2025	0.000 MG/MONTH			WUSUB-15147
Water Use Report (Monthly withdrawal for WELL 13 (LH2-1))	Well	13 (LH2-1)	193396	Pumpage Data	30-Jun-2025	0.000 MG/MONTH			WUSUB-11068
Water Use Report (Monthly withdrawal for WELL 13 (LH2-1))	Well	13 (LH2-1)	193396	Pumpage Data	31-May-2025	0.000 MG/MONTH			WUSUB-11068
Water Use Report (Monthly withdrawal for WELL 13 (LH2-1))	Well	13 (LH2-1)	193396	Pumpage Data	30-Apr-2025	0.000 MG/MONTH			WUSUB-11068
Water Use Report (Monthly withdrawal for WELL 13 (LH2-1))	Well	13 (LH2-1)	193396	Pumpage Data	31-Mar-2025	0.000 MG/MONTH			WUSUB-7520
Water Use Report (Monthly withdrawal for WELL 13 (LH2-1))	Well	13 (LH2-1)	193396	Pumpage Data	28-Feb-2025	0.000 MG/MONTH			WUSUB-7520
Water Use Report (Monthly withdrawal for WELL 13 (LH2-1))	Well	13 (LH2-1)	193396	Pumpage Data	31-Jan-2025	0.000 MG/MONTH			WUSUB-7520
Water Use Report (Monthly withdrawal for WELL 13 (LH2-1))	Well	13 (LH2-1)	193396	Pumpage Data	31-Dec-2024	0.000 MG/MONTH			WUSUB-3674
Water Use Report (Monthly withdrawal for WELL 13 (LH2-1))	Well	13 (LH2-1)	193396	Pumpage Data	30-Nov-2024	0.000 MG/MONTH			WUSUB-3674

Water Use Report (Monthly withdrawal for WELL 13 (LH2-1))	Well	13 (LH2-1)	193396	Pumpage Data	31-Oct-2024	0.000 MG/MONTH		WUSUB-3674
Water Use Report (Monthly withdrawal for WELL 13 (LH2-1))	Well	13 (LH2-1)	193396	Pumpage Data	30-Sep-2024	0.000 MG/MONTH		WUSUB-613
Water Use Report (Monthly withdrawal for WELL 13 (LH2-1))	Well	13 (LH2-1)	193396	Pumpage Data	31-Aug-2024	0.000 MG/MONTH		WUSUB-613
Water Use Report (Monthly withdrawal for WELL 13 (LH2-1))	Well	13 (LH2-1)	193396	Pumpage Data	31-Jul-2024	0.000 MG/MONTH		WUSUB-613
Water Use Report	WELL	13 (LH2-1)	193396	Pumpage Data	30-Jun-2024	0.000 MG/MONTH		6896095
Water Use Report	WELL	13 (LH2-1)	193396	Pumpage Data	31-May-2024	0.000 MG/MONTH		6896094
Water Use Report	WELL	13 (LH2-1)	193396	Pumpage Data	30-Apr-2024	0.000 MG/MONTH		6896093
Water Use Report	WELL	13 (LH2-1)	193396	Pumpage Data	31-Mar-2024	0.000 MG/MONTH		6831534
Water Use Report	WELL	13 (LH2-1)	193396	Pumpage Data	29-Feb-2024	0.000 MG/MONTH		6831533
Water Use Report	WELL	13 (LH2-1)	193396	Pumpage Data	31-Jan-2024	0.000 MG/MONTH		6831532
Water Use Report (Monthly withdrawal for WELL 14 (LH2-2))	Well	14 (LH2-2)	193397	Pumpage Data	30-Sep-2025	0.000 MG/MONTH		WUSUB-15147
Water Use Report (Monthly withdrawal for WELL 14 (LH2-2))	Well	14 (LH2-2)	193397	Pumpage Data	31-Aug-2025	0.000 MG/MONTH		WUSUB-15147
Water Use Report (Monthly withdrawal for WELL 14 (LH2-2))	Well	14 (LH2-2)	193397	Pumpage Data	31-Jul-2025	0.000 MG/MONTH		WUSUB-15147
Water Use Report (Monthly withdrawal for WELL 14 (LH2-2))	Well	14 (LH2-2)	193397	Pumpage Data	30-Jun-2025	0.000 MG/MONTH		WUSUB-11068
Water Use Report (Monthly withdrawal for WELL 14 (LH2-2))	Well	14 (LH2-2)	193397	Pumpage Data	31-May-2025	0.000 MG/MONTH		WUSUB-11068
Water Use Report (Monthly withdrawal for WELL 14 (LH2-2))	Well	14 (LH2-2)	193397	Pumpage Data	30-Apr-2025	0.000 MG/MONTH		WUSUB-11068
Water Use Report (Monthly withdrawal for WELL 14 (LH2-2))	Well	14 (LH2-2)	193397	Pumpage Data	31-Mar-2025	0.000 MG/MONTH		WUSUB-7520
Water Use Report (Monthly withdrawal for WELL 14 (LH2-2))	Well	14 (LH2-2)	193397	Pumpage Data	28-Feb-2025	0.000 MG/MONTH		WUSUB-7520
Water Use Report (Monthly withdrawal for WELL 14 (LH2-2))	Well	14 (LH2-2)	193397	Pumpage Data	31-Jan-2025	0.000 MG/MONTH		WUSUB-7520
Water Use Report (Monthly withdrawal for WELL 14 (LH2-2))	Well	14 (LH2-2)	193397	Pumpage Data	31-Dec-2024	0.000 MG/MONTH		WUSUB-3674
Water Use Report (Monthly withdrawal for WELL 14 (LH2-2))	Well	14 (LH2-2)	193397	Pumpage Data	30-Nov-2024	0.000 MG/MONTH		WUSUB-3674
Water Use Report (Monthly withdrawal for WELL 14 (LH2-2))	Well	14 (LH2-2)	193397	Pumpage Data	31-Oct-2024	0.000 MG/MONTH		WUSUB-3674
Water Use Report (Monthly withdrawal for WELL 14 (LH2-2))	Well	14 (LH2-2)	193397	Pumpage Data	30-Sep-2024	0.000 MG/MONTH		WUSUB-613
Water Use Report (Monthly withdrawal for WELL 14 (LH2-2))	Well	14 (LH2-2)	193397	Pumpage Data	31-Aug-2024	0.000 MG/MONTH		WUSUB-613
Water Use Report (Monthly withdrawal for WELL 14 (LH2-2))	Well	14 (LH2-2)	193397	Pumpage Data	31-Jul-2024	0.000 MG/MONTH		WUSUB-613
Water Use Report	WELL	14 (LH2-2)	193397	Pumpage Data	30-Jun-2024	0.000 MG/MONTH		6896098
Water Use Report	WELL	14 (LH2-2)	193397	Pumpage Data	31-May-2024	0.000 MG/MONTH		6896097
Water Use Report	WELL	14 (LH2-2)	193397	Pumpage Data	30-Apr-2024	0.000 MG/MONTH		6896096
Water Use Report	WELL	14 (LH2-2)	193397	Pumpage Data	31-Mar-2024	0.000 MG/MONTH		6831537
Water Use Report	WELL	14 (LH2-2)	193397	Pumpage Data	29-Feb-2024	0.000 MG/MONTH		6831536
Water Use Report	WELL	14 (LH2-2)	193397	Pumpage Data	31-Jan-2024	0.000 MG/MONTH		6831535
Water Use Report (Monthly withdrawal for WELL 15 (LH2-3))	Well	15 (LH2-3)	193398	Pumpage Data	30-Sep-2025	MG/MONTH	p	WUSUB-15147
Water Use Report (Monthly withdrawal for WELL 15 (LH2-3))	Well	15 (LH2-3)	193398	Pumpage Data	31-Aug-2025	MG/MONTH	p	WUSUB-15147
Water Use Report (Monthly withdrawal for WELL 15 (LH2-3))	Well	15 (LH2-3)	193398	Pumpage Data	31-Jul-2025	MG/MONTH	p	WUSUB-15147

Water Use Report (Monthly withdrawal for WELL 15 (LH2-3))	Well	15 (LH2-3)	193398	Pumpage Data	30-Jun-2025	MG/MONTH	p		WUSUB-11068
Water Use Report (Monthly withdrawal for WELL 15 (LH2-3))	Well	15 (LH2-3)	193398	Pumpage Data	31-May-2025	MG/MONTH	p		WUSUB-11068
Water Use Report (Monthly withdrawal for WELL 15 (LH2-3))	Well	15 (LH2-3)	193398	Pumpage Data	30-Apr-2025	MG/MONTH	p		WUSUB-11068
Water Use Report (Monthly withdrawal for WELL 15 (LH2-3))	Well	15 (LH2-3)	193398	Pumpage Data	31-Mar-2025	MG/MONTH	p		WUSUB-7520
Water Use Report (Monthly withdrawal for WELL 15 (LH2-3))	Well	15 (LH2-3)	193398	Pumpage Data	28-Feb-2025	MG/MONTH	p		WUSUB-7520
Water Use Report (Monthly withdrawal for WELL 15 (LH2-3))	Well	15 (LH2-3)	193398	Pumpage Data	31-Jan-2025	MG/MONTH	p		WUSUB-7520
Water Use Report (Monthly withdrawal for WELL 15 (LH2-3))	Well	15 (LH2-3)	193398	Pumpage Data	31-Dec-2024	MG/MONTH	p		WUSUB-3674
Water Use Report (Monthly withdrawal for WELL 15 (LH2-3))	Well	15 (LH2-3)	193398	Pumpage Data	30-Nov-2024	MG/MONTH	p		WUSUB-3674
Water Use Report (Monthly withdrawal for WELL 15 (LH2-3))	Well	15 (LH2-3)	193398	Pumpage Data	31-Oct-2024	MG/MONTH	p		WUSUB-3674
Water Use Report (Monthly withdrawal for WELL 15 (LH2-3))	Well	15 (LH2-3)	193398	Pumpage Data	30-Sep-2024	MG/MONTH	P		WUSUB-613
Water Use Report (Monthly withdrawal for WELL 15 (LH2-3))	Well	15 (LH2-3)	193398	Pumpage Data	31-Aug-2024	MG/MONTH	P		WUSUB-613
Water Use Report (Monthly withdrawal for WELL 15 (LH2-3))	Well	15 (LH2-3)	193398	Pumpage Data	31-Jul-2024	MG/MONTH	P		WUSUB-613
Water Use Report	WELL	15 (LH2-3)	193398	Pumpage Data	30-Jun-2024	MG/MONTH	proposed	proposed	6896101
Water Use Report	WELL	15 (LH2-3)	193398	Pumpage Data	31-May-2024	MG/MONTH	proposed	proposed	6896100
Water Use Report	WELL	15 (LH2-3)	193398	Pumpage Data	30-Apr-2024	MG/MONTH	proposed	proposed	6896099
Water Use Report	WELL	15 (LH2-3)	193398	Pumpage Data	31-Mar-2024	MG/MONTH	proposed	proposed	6831540
Water Use Report	WELL	15 (LH2-3)	193398	Pumpage Data	29-Feb-2024	MG/MONTH	proposed	proposed	6831539
Water Use Report	WELL	15 (LH2-3)	193398	Pumpage Data	31-Jan-2024	MG/MONTH	proposed	proposed	6831538
Water Use Report (Monthly withdrawal	Well	2 (SS2-2)	193385	Pumpage Data	9/30/2025	0 MG/MONTH			WUSUB-15147
Water Use Report (Monthly withdrawal	Well	2 (SS2-2)	193385	Pumpage Data	8/31/2025	0 MG/MONTH			WUSUB-15147
Water Use Report (Monthly withdrawal	Well	2 (SS2-2)	193385	Pumpage Data	7/31/2025	0 MG/MONTH			WUSUB-15147
Water Use Report (Monthly withdrawal	Well	2 (SS2-2)	193385	Pumpage Data	6/30/2025	0 MG/MONTH			WUSUB-11068
Water Use Report (Monthly withdrawal	Well	2 (SS2-2)	193385	Pumpage Data	5/31/2025	0 MG/MONTH			WUSUB-11068
Water Use Report (Monthly withdrawal	Well	2 (SS2-2)	193385	Pumpage Data	4/30/2025	0 MG/MONTH			WUSUB-11068
Water Use Report (Monthly withdrawal	Well	2 (SS2-2)	193385	Pumpage Data	3/31/2025	0 MG/MONTH			WUSUB-7520
Water Use Report (Monthly withdrawal	Well	2 (SS2-2)	193385	Pumpage Data	2/28/2025	0 MG/MONTH			WUSUB-7520
Water Use Report (Monthly withdrawal	Well	2 (SS2-2)	193385	Pumpage Data	1/31/2025	0 MG/MONTH			WUSUB-7520
Water Use Report (Monthly withdrawal	Well	2 (SS2-2)	193385	Pumpage Data	12/31/2024	0 MG/MONTH			WUSUB-3674
Water Use Report (Monthly withdrawal	Well	2 (SS2-2)	193385	Pumpage Data	11/30/2024	0 MG/MONTH			WUSUB-3674
Water Use Report (Monthly withdrawal	Well	2 (SS2-2)	193385	Pumpage Data	10/31/2024	0 MG/MONTH			WUSUB-3674
Water Use Report (Monthly withdrawal	Well	2 (SS2-2)	193385	Pumpage Data	9/30/2024	0 MG/MONTH			WUSUB-613
Water Use Report (Monthly withdrawal	Well	2 (SS2-2)	193385	Pumpage Data	8/31/2024	0 MG/MONTH			WUSUB-613
Water Use Report (Monthly withdrawal	Well	2 (SS2-2)	193385	Pumpage Data	7/31/2024	0 MG/MONTH			WUSUB-613
Water Use Report	WELL	2 (SS2-2)	193385	Pumpage Data	6/30/2024	0 MG/MONTH			6896062
Water Use Report	WELL	2 (SS2-2)	193385	Pumpage Data	5/31/2024	0 MG/MONTH			6896061
Water Use Report	WELL	2 (SS2-2)	193385	Pumpage Data	4/30/2024	0 MG/MONTH			6896060
Water Use Report	WELL	2 (SS2-2)	193385	Pumpage Data	3/31/2024	0 MG/MONTH			6831501
Water Use Report	WELL	2 (SS2-2)	193385	Pumpage Data	2/29/2024	0 MG/MONTH			6831500
Water Use Report	WELL	2 (SS2-2)	193385	Pumpage Data	1/31/2024	0 MG/MONTH			6831499
Water Use Report (Monthly withdrawal	Well	4 (SS2-4)	193387	Pumpage Data	9/30/2025	0 MG/MONTH			WUSUB-15147
Water Use Report (Monthly withdrawal	Well	4 (SS2-4)	193387	Pumpage Data	8/31/2025	0 MG/MONTH			WUSUB-15147
Water Use Report (Monthly withdrawal	Well	4 (SS2-4)	193387	Pumpage Data	7/31/2025	0 MG/MONTH			WUSUB-15147

Water Use Report (Monthly withdrawal	Well	4 (SS2-4)	193387	Pumpage Data	6/30/2025	7.14 MG/MONTH	WUSUB-11068
Water Use Report (Monthly withdrawal	Well	4 (SS2-4)	193387	Pumpage Data	5/31/2025	6.79 MG/MONTH	WUSUB-11068
Water Use Report (Monthly withdrawal	Well	4 (SS2-4)	193387	Pumpage Data	4/30/2025	6.3 MG/MONTH	WUSUB-11068
Water Use Report (Monthly withdrawal	Well	4 (SS2-4)	193387	Pumpage Data	3/31/2025	8.04 MG/MONTH	WUSUB-7520
Water Use Report (Monthly withdrawal	Well	4 (SS2-4)	193387	Pumpage Data	2/28/2025	7.12 MG/MONTH	WUSUB-7520
Water Use Report (Monthly withdrawal	Well	4 (SS2-4)	193387	Pumpage Data	1/31/2025	7.9 MG/MONTH	WUSUB-7520
Water Use Report (Monthly withdrawal	Well	4 (SS2-4)	193387	Pumpage Data	12/31/2024	0 MG/MONTH	WUSUB-3674
Water Use Report (Monthly withdrawal	Well	4 (SS2-4)	193387	Pumpage Data	11/30/2024	0 MG/MONTH	WUSUB-3674
Water Use Report (Monthly withdrawal	Well	4 (SS2-4)	193387	Pumpage Data	10/31/2024	0 MG/MONTH	WUSUB-3674
Water Use Report (Monthly withdrawal	Well	4 (SS2-4)	193387	Pumpage Data	9/30/2024	0 MG/MONTH	WUSUB-613
Water Use Report (Monthly withdrawal	Well	4 (SS2-4)	193387	Pumpage Data	8/31/2024	0 MG/MONTH	WUSUB-613
Water Use Report (Monthly withdrawal	Well	4 (SS2-4)	193387	Pumpage Data	7/31/2024	0 MG/MONTH	WUSUB-613
Water Use Report	WELL	4 (SS2-4)	193387	Pumpage Data	6/30/2024	7.83 MG/MONTH	6896068
Water Use Report	WELL	4 (SS2-4)	193387	Pumpage Data	5/31/2024	4.38 MG/MONTH	6896067
Water Use Report	WELL	4 (SS2-4)	193387	Pumpage Data	4/30/2024	8.38 MG/MONTH	6896066
Water Use Report	WELL	4 (SS2-4)	193387	Pumpage Data	3/31/2024	8.59 MG/MONTH	6831507
Water Use Report	WELL	4 (SS2-4)	193387	Pumpage Data	2/29/2024	6.17 MG/MONTH	6831506
Water Use Report	WELL	4 (SS2-4)	193387	Pumpage Data	1/31/2024	8.89 MG/MONTH	6831505
Water Use Report (Monthly withdrawal	Facility Group	PS 2 Golf Course		Pumpage Data	12/31/2025	13.11 MG/MONTH	WUSUB-18289
Water Use Report (Monthly withdrawal	Facility Group	PS 2 Golf Course		Pumpage Data	11/30/2025	10.98 MG/MONTH	WUSUB-18289
Water Use Report (Monthly withdrawal	Facility Group	PS 2 Golf Course		Pumpage Data	9/30/2025	9.75 MG/MONTH	WUSUB-15147
Water Use Report (Monthly withdrawal	Facility Group	PS 2 Golf Course		Pumpage Data	8/31/2025	3.83 MG/MONTH	WUSUB-15147
Water Use Report (Monthly withdrawal	Facility Group	PS 2 Golf Course		Pumpage Data	7/31/2025	8.64 MG/MONTH	WUSUB-15147
Water Use Report (Monthly withdrawal	Facility Group	PS 2 Golf Course		Pumpage Data	6/30/2025	13.85 MG/MONTH	WUSUB-11068
Water Use Report (Monthly withdrawal	Facility Group	PS 2 Golf Course		Pumpage Data	5/31/2025	13.88 MG/MONTH	WUSUB-11068
Water Use Report (Monthly withdrawal	Facility Group	PS 2 Golf Course		Pumpage Data	4/30/2025	13.97 MG/MONTH	WUSUB-11068
Water Use Report (Monthly withdrawal	Facility Group	PS 2 Golf Course		Pumpage Data	3/31/2025	18.17 MG/MONTH	WUSUB-7520
Water Use Report (Monthly withdrawal	Facility Group	PS 2 Golf Course		Pumpage Data	2/28/2025	11.42 MG/MONTH	WUSUB-7520
Water Use Report (Monthly withdrawal	Facility Group	PS 2 Golf Course		Pumpage Data	1/31/2025	4.35 MG/MONTH	WUSUB-7520
Water Use Report (Monthly withdrawal	Facility Group	PS 2 Golf Course		Pumpage Data	12/31/2024	8.92 MG/MONTH	WUSUB-3674
Water Use Report (Monthly withdrawal	Facility Group	PS 2 Golf Course		Pumpage Data	11/30/2024	11.4 MG/MONTH	WUSUB-3674
Water Use Report (Monthly withdrawal	Facility Group	PS 2 Golf Course		Pumpage Data	10/31/2024	7.84 MG/MONTH	WUSUB-3674
Water Use Report (Monthly withdrawal	Facility Group	PS 2 Golf Course		Pumpage Data	9/30/2024	4.87 MG/MONTH	WUSUB-613
Water Use Report (Monthly withdrawal	Facility Group	PS 2 Golf Course		Pumpage Data	8/31/2024	12.11 MG/MONTH	WUSUB-613
Water Use Report (Monthly withdrawal	Facility Group	PS 2 Golf Course		Pumpage Data	7/31/2024	8.3 MG/MONTH	WUSUB-613
Water Use Report	FACILITY GROUP	PS 2 Golf Course		Pumpage Data	6/30/2024	22.1 MG/MONTH	6896056
Water Use Report	FACILITY GROUP	PS 2 Golf Course		Pumpage Data	5/31/2024	23.77 MG/MONTH	6896055
Water Use Report	FACILITY GROUP	PS 2 Golf Course		Pumpage Data	4/30/2024	17.59 MG/MONTH	6896054
Water Use Report	FACILITY GROUP	PS 2 Golf Course		Pumpage Data	3/31/2024	14.48 MG/MONTH	6831495
Water Use Report	FACILITY GROUP	PS 2 Golf Course		Pumpage Data	2/29/2024	5.53 MG/MONTH	6831494
Water Use Report	FACILITY GROUP	PS 2 Golf Course		Pumpage Data	1/31/2024	4 MG/MONTH	6831493
Water Use Report (Monthly withdrawal	Pump	PS-5	290542	Pumpage Data	12/31/2025	16.5 MG/MONTH	WUSUB-18289
Water Use Report (Monthly withdrawal	Pump	PS-5	290542	Pumpage Data	11/30/2025	20.51 MG/MONTH	WUSUB-18289
Water Use Report (Monthly withdrawal	Pump	PS-5	290542	Pumpage Data	10/31/2025	17.25 MG/MONTH	WUSUB-18289
Water Use Report (Monthly withdrawal	Pump	PS-5	290542	Pumpage Data	9/30/2025	11.62 MG/MONTH	WUSUB-15147
Water Use Report (Monthly withdrawal	Pump	PS-5	290542	Pumpage Data	8/31/2025	11.35 MG/MONTH	WUSUB-15147
Water Use Report (Monthly withdrawal	Pump	PS-5	290542	Pumpage Data	7/31/2025	9.6 MG/MONTH	WUSUB-15147
Water Use Report (Monthly withdrawal	Pump	PS-5	290542	Pumpage Data	6/30/2025	9.73 MG/MONTH	WUSUB-11068
Water Use Report (Monthly withdrawal	Pump	PS-5	290542	Pumpage Data	5/31/2025	17.46 MG/MONTH	WUSUB-11068
Water Use Report (Monthly withdrawal	Pump	PS-5	290542	Pumpage Data	4/30/2025	19.51 MG/MONTH	WUSUB-11068
Water Use Report (Monthly withdrawal	Pump	PS-5	290542	Pumpage Data	3/31/2025	17.57 MG/MONTH	WUSUB-7520

Water Use Report (Monthly withdrawal	Pump	PS-5	290542	Pumpage Data	2/28/2025	15.39 MG/MONTH	WUSUB-7520
Water Use Report (Monthly withdrawal	Pump	PS-5	290542	Pumpage Data	1/31/2025	15.14 MG/MONTH	WUSUB-7520
Water Use Report (Monthly withdrawal	Pump	PS-5	290542	Pumpage Data	12/31/2024	17.46 MG/MONTH	WUSUB-3674
Water Use Report (Monthly withdrawal	Pump	PS-5	290542	Pumpage Data	11/30/2024	18.06 MG/MONTH	WUSUB-3674
Water Use Report (Monthly withdrawal	Pump	PS-5	290542	Pumpage Data	10/31/2024	12.73 MG/MONTH	WUSUB-3674
Water Use Report (Monthly withdrawal	Pump	PS-5	290542	Pumpage Data	9/30/2024	12.09 MG/MONTH	WUSUB-613
Water Use Report (Monthly withdrawal	Pump	PS-5	290542	Pumpage Data	8/31/2024	14.75 MG/MONTH	WUSUB-613
Water Use Report (Monthly withdrawal	Pump	PS-5	290542	Pumpage Data	7/31/2024	13.3 MG/MONTH	WUSUB-613
Water Use Report	PUMP	PS-5	290542	Pumpage Data	6/30/2024	13.43 MG/MONTH	6896119
Water Use Report	PUMP	PS-5	290542	Pumpage Data	5/31/2024	20.34 MG/MONTH	6896118
Water Use Report	PUMP	PS-5	290542	Pumpage Data	4/30/2024	19.8 MG/MONTH	6896117
Water Use Report	PUMP	PS-5	290542	Pumpage Data	3/31/2024	19.05 MG/MONTH	6831558
Water Use Report	PUMP	PS-5	290542	Pumpage Data	2/29/2024	8.13 MG/MONTH	6831557
Water Use Report	PUMP	PS-5	290542	Pumpage Data	1/31/2024	12.92 MG/MONTH	6831556
Water Use Report (Monthly withdrawal	Facility Group	PS1		Pumpage Data	9/30/2025	3.26 MG/MONTH	WUSUB-15147
Water Use Report (Monthly withdrawal	Facility Group	PS1		Pumpage Data	8/31/2025	3.45 MG/MONTH	WUSUB-15147
Water Use Report (Monthly withdrawal	Facility Group	PS1		Pumpage Data	7/31/2025	5.24 MG/MONTH	WUSUB-15147
Water Use Report (Monthly withdrawal	Facility Group	PS1		Pumpage Data	6/30/2025	5.66 MG/MONTH	WUSUB-11068
Water Use Report (Monthly withdrawal	Facility Group	PS1		Pumpage Data	5/31/2025	5.71 MG/MONTH	WUSUB-11068
Water Use Report (Monthly withdrawal	Facility Group	PS1		Pumpage Data	4/30/2025	4.21 MG/MONTH	WUSUB-11068
Water Use Report (Monthly withdrawal	Facility Group	PS1		Pumpage Data	3/31/2025	10.44 MG/MONTH	WUSUB-7520
Water Use Report (Monthly withdrawal	Facility Group	PS1		Pumpage Data	2/28/2025	3.74 MG/MONTH	WUSUB-7520
Water Use Report (Monthly withdrawal	Facility Group	PS1		Pumpage Data	1/31/2025	3.88 MG/MONTH	WUSUB-7520
Water Use Report (Monthly withdrawal	Facility Group	PS1		Pumpage Data	12/31/2024	4.27 MG/MONTH	WUSUB-3674
Water Use Report (Monthly withdrawal	Facility Group	PS1		Pumpage Data	11/30/2024	4.73 MG/MONTH	WUSUB-3674
Water Use Report (Monthly withdrawal	Facility Group	PS1		Pumpage Data	10/31/2024	4.88 MG/MONTH	WUSUB-3674
Water Use Report (Monthly withdrawal	Facility Group	PS1		Pumpage Data	9/30/2024	5.19 MG/MONTH	WUSUB-613
Water Use Report (Monthly withdrawal	Facility Group	PS1		Pumpage Data	8/31/2024	5.41 MG/MONTH	WUSUB-613
Water Use Report (Monthly withdrawal	Facility Group	PS1		Pumpage Data	7/31/2024	5.47 MG/MONTH	WUSUB-613
Water Use Report	FACILITY GROUP	PS1		Pumpage Data	6/30/2024	8.38 MG/MONTH	6896050
Water Use Report	FACILITY GROUP	PS1		Pumpage Data	5/31/2024	7.61 MG/MONTH	6896049
Water Use Report	FACILITY GROUP	PS1		Pumpage Data	4/30/2024	3.62 MG/MONTH	6896048
Water Use Report	FACILITY GROUP	PS1		Pumpage Data	3/31/2024	5.63 MG/MONTH	6831489
Water Use Report	FACILITY GROUP	PS1		Pumpage Data	2/29/2024	3.32 MG/MONTH	6831488
Water Use Report	FACILITY GROUP	PS1		Pumpage Data	1/31/2024	5.22 MG/MONTH	6831487
Water Use Report (Monthly withdrawal	Facility Group	PS2 Residential		Pumpage Data	12/31/2025	9.72 MG/MONTH	WUSUB-18289
Water Use Report (Monthly withdrawal	Facility Group	PS2 Residential		Pumpage Data	11/30/2025	12.46 MG/MONTH	WUSUB-18289
Water Use Report (Monthly withdrawal	Facility Group	PS2 Residential		Pumpage Data	10/31/2025	16.25 MG/MONTH	WUSUB-18289
Water Use Report (Monthly withdrawal	Facility Group	PS2 Residential		Pumpage Data	9/30/2025	12.91 MG/MONTH	WUSUB-15147
Water Use Report (Monthly withdrawal	Facility Group	PS2 Residential		Pumpage Data	8/31/2025	9.14 MG/MONTH	WUSUB-15147
Water Use Report (Monthly withdrawal	Facility Group	PS2 Residential		Pumpage Data	7/31/2025	14.3 MG/MONTH	WUSUB-15147
Water Use Report (Monthly withdrawal	Facility Group	PS2 Residential		Pumpage Data	6/30/2025	12.34 MG/MONTH	WUSUB-11068
Water Use Report (Monthly withdrawal	Facility Group	PS2 Residential		Pumpage Data	5/31/2025	11.83 MG/MONTH	WUSUB-11068
Water Use Report (Monthly withdrawal	Facility Group	PS2 Residential		Pumpage Data	4/30/2025	11.71 MG/MONTH	WUSUB-11068
Water Use Report (Monthly withdrawal	Facility Group	PS2 Residential		Pumpage Data	3/31/2025	17.92 MG/MONTH	WUSUB-7520
Water Use Report (Monthly withdrawal	Facility Group	PS2 Residential		Pumpage Data	2/28/2025	9.79 MG/MONTH	WUSUB-7520
Water Use Report (Monthly withdrawal	Facility Group	PS2 Residential		Pumpage Data	1/31/2025	8.92 MG/MONTH	WUSUB-7520
Water Use Report (Monthly withdrawal	Facility Group	PS2 Residential		Pumpage Data	12/31/2024	12.42 MG/MONTH	WUSUB-3674
Water Use Report (Monthly withdrawal	Facility Group	PS2 Residential		Pumpage Data	11/30/2024	12.64 MG/MONTH	WUSUB-3674
Water Use Report (Monthly withdrawal	Facility Group	PS2 Residential		Pumpage Data	10/31/2024	10.36 MG/MONTH	WUSUB-3674
Water Use Report (Monthly withdrawal	Facility Group	PS2 Residential		Pumpage Data	9/30/2024	13.08 MG/MONTH	WUSUB-613

Water Use Report (Monthly withdrawal	Facility Group	PS2 Residential	Pumpage Data	8/31/2024	13.54 MG/MONTH		WUSUB-613
Water Use Report (Monthly withdrawal	Facility Group	PS2 Residential	Pumpage Data	7/31/2024	10.94 MG/MONTH		WUSUB-613
Water Use Report	FACILITY GROUP	PS2 Residential	Pumpage Data	6/30/2024	20.62 MG/MONTH		6896053
Water Use Report	FACILITY GROUP	PS2 Residential	Pumpage Data	5/31/2024	0 MG/MONTH		6896052
Water Use Report	FACILITY GROUP	PS2 Residential	Pumpage Data	4/30/2024	0 MG/MONTH		6896051
Water Use Report	FACILITY GROUP	PS2 Residential	Pumpage Data	3/31/2024	MG/MONTH	no access no access	6831492
Water Use Report	FACILITY GROUP	PS2 Residential	Pumpage Data	2/29/2024	8.42 MG/MONTH		6831491
Water Use Report	FACILITY GROUP	PS2 Residential	Pumpage Data	1/31/2024	13.58 MG/MONTH		6831490

Lake Repair List

Lake 2-2A Washout Locations:



Apple Blossom Drive House #: 3043

Cause: Concentrated bank erosion

Lake 2-2B Washout Locations:



Apple Blossom Drive House #: 3114

Cause: Residential irrigation line

Lake 2-2C Washout Locations:



Citrus Tree CT House #: 15054

Cause: Concentrated bank erosion

Lake 2-2D Washout Locations:



Great Laurel CT House #: 15009

Cause: Roof stormwater runoff

Lake 2-3A Washout Locations:



Angelica Drive House #: 15611

Cause: Roof stormwater runoff



Angelica Drive House #: 15643

Cause: Roof stormwater runoff

Lake 2-6C Washout Locations:



Mistflower Drive House #: 16019

Cause: Roof stormwater runoff



Mistflower Drive House #: 16057

Cause: Cause: Roof stormwater runoff

Lake 2-7 Washout Locations:



Mistflower Drive House #: 16030

Cause: Roof stormwater runoff



Palmetto Prairie Drive House #: 16009

Cause: Roof stormwater runoff

Lake 2-8B Washout Locations:



East Hampton Circle House #: 4018

Cause: Roof stormwater runoff

Lake 2-8C Washout Locations:



Rain Lily Lane House #: 3611

Cause: Concentrated bank erosion



Rain Lily Lane House #: 3643

Cause: Roof stormwater runoff

Lake 2-8E Washout Locations:



East Hampton Cir House #: 3611

Cause: Roof drain runoff



Passion Vine Dr House #: 3740

Cause: Roof drain runoff



Wild Sage Way House #: 3655

Cause: Roof drain runoff



Passion Vine Dr House #: 3728

Cause: Roof drain runoff



Wild Sage Way House #: 3645

Cause: Roof drain runoff

Lake 2-8F Washout Locations:



Wild Sage Way House #: 3706

Cause: Roof drain runoff



East Hampton Cir House #: 3960

Cause: Roof drain runoff



East Hampton Cir House #: 3968

Cause: Roof drain runoff

Bowman



Bacopa Drive House #: 16218

Cause: Roof drain runoff



Wild Sage Way House #: 3626

Cause: Roof drain runoff

Lake 3-3 Washout Locations:



Oakstead Drive House #: 16951

Cause: Roof stormwater runoff



Oakstead Drive House #: 17081

Cause: Roof stormwater runoff



Moss Way House #: 3109

Cause: Roof stormwater runoff

Lake 3-5A Washout Locations:



Sunny Lake CT House #: 17038

Cause: Roof stormwater runoff

Lake 3-5B Washout Locations:



Chestnut Grove Drive House #: 3324

Cause: Residential irrigation line



Chestnut Grove Drive House #: 3388

Cause: Roof stormwater runoff



Chestnut Grove Drive House #: 3398

Cause: Roof stormwater runoff

Lake 3-5D Washout Locations:



Chestnut Grove Drive House #: 3353

Cause: Roof stormwater runoff

Lake 4-1A Washout Locations:



Sagittaria Lane House #: 2981

Cause: Roof stormwater runoff



Sagittaria Lane House #: 2993

Cause: Roof stormwater runoff



Oakstead Drive House #: 17102

Cause: Roof stormwater runoff



Oakstead Drive House #: 17102

Cause: Roof stormwater runoff

Lake 4-1B Washout Locations:



Walnut Grove Lane House #: 3002

Cause: Stormwater runoff



Weston Manor Drive House #: 3092

Cause: Golf course stormwater irrigation



Sagitarria Lane House #: 3000

Cause: Roof stormwater runoff

Lake 4-1E Washout Locations:



Walnut Grove Lane House #: 3130

Cause: Concentrated bank erosion

Lake 4-2H Washout Locations:



Stormy Creek Lane House #: 3509

Cause: Roof stormwater runoff



Walnut Run Drive House #: 17266

Cause: Roof stormwater runoff/bank erosion

RIVER HALL
COMMUNITY DEVELOPMENT DISTRICT

STAFF
REPORTS
C

RIVER HALL COMMUNITY DEVELOPMENT DISTRICT		
BOARD OF SUPERVISORS FISCAL YEAR 2025/2026 MEETING SCHEDULE		
LOCATION		
<i>River Hall Town Hall Center, located at 3089 River Hall Parkway, Alva, Florida 33920</i>		
¹ <i>River Hall Town Hall Center, Kids Room, located at 3089 River Hall Parkway, Alva, Florida 33920</i>		
DATE	POTENTIAL DISCUSSION/FOCUS	TIME
October 2, 2025	Regular Meeting	3:30 PM
November 6, 2025 ¹	Regular Meeting	3:30 PM
December 4, 2025 <i>rescheduled to December 11, 2025</i>	Regular Meeting	3:30 PM
December 11, 2025	Regular Meeting	3:30 PM
January 8, 2026*	Regular Meeting	3:30 PM
February 5, 2026	Regular Meeting	3:30 PM
March 5, 2026	Regular Meeting	3:30 PM
April 2, 2026	Regular Meeting	3:30 PM
May 7, 2026	Regular Meeting	3:30 PM
June 4, 2026	Regular Meeting	3:30 PM
July 2, 2026	Regular Meeting	3:30 PM
August 6, 2026	Regular Meeting	3:30 PM
September 3, 2026	Regular Meeting	3:30 PM

Exception

**The January meeting date is one (1) week later to accommodate the New Year's Day Holiday*